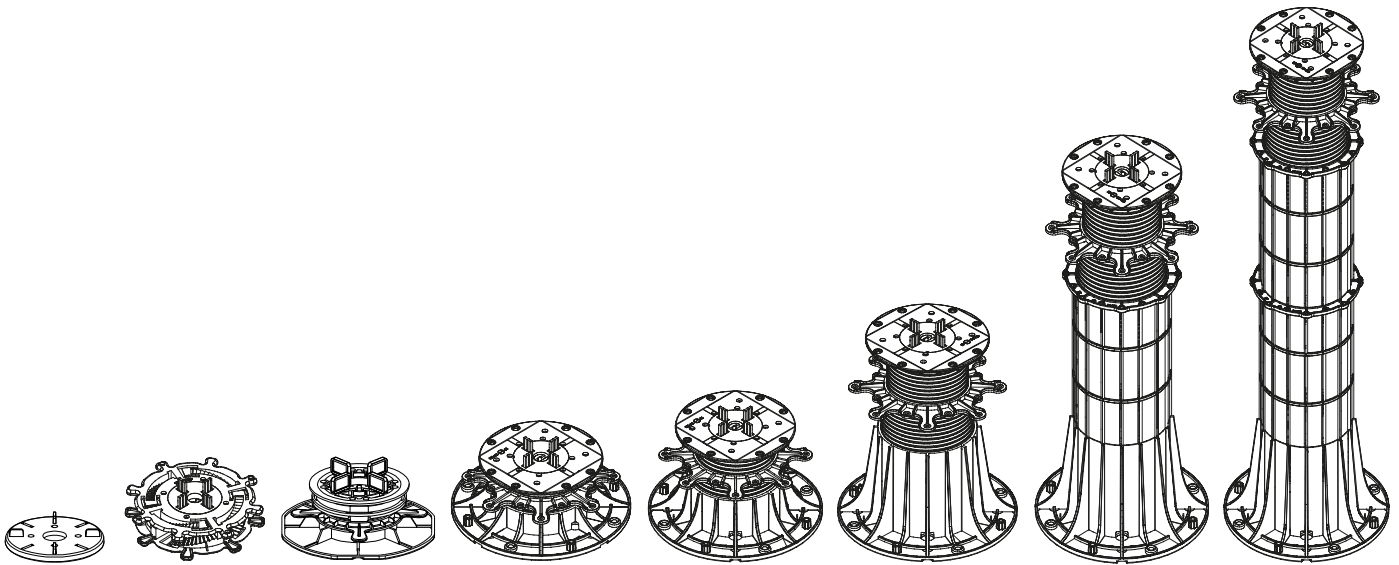




# **SKYJACK PEDESTALS**

ADJUSTABLE PEDESTAL SYSTEM by SKYDECK USA



## **ADJUSTABLE HEIGHT PEDESTALS**

**FOR ELEVATING ALL VARIETIES AND LOCATIONS OF TERRACE DECKING**

**DETAIL MANUAL**



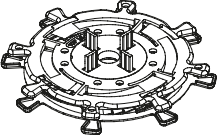
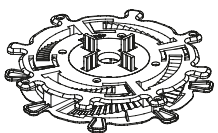
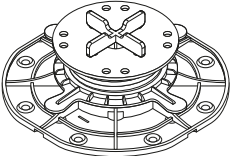

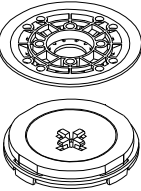

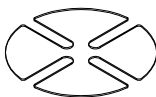
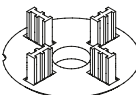
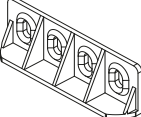
**skydeck  
usa**

## COMPONENTS LIST

### SKYJACK PEDESTALS

Adjustable Pedestal System by SKYDECK USA

www.skydeckusa.com  
info@skydeckusa.com

	<p>ADJUSTABLE PEDESTAL SD-XXS</p>	<p>ADJUSTABLE PEDESTAL SD-XXS is made up of a top piece and bottom piece that sit on top of one another. Twist 8 ergonomic handles to adjust height in 1mm increments.</p> <p>SD-XXS height adjusts from 1/3" - 5/8".</p>
	<p>ADJUSTABLE PEDESTAL SD-XS</p>	<p>ADJUSTABLE PEDESTAL SD-XS is made up of a top piece and bottom piece that sit on top of one another. Twist 8 ergonomic handles to adjust height in 1mm increments.</p> <p>SD-XS height adjusts from 5/8" to 1.25".</p>
	<p>ADJUSTABLE PEDESTAL SD-S</p>	<p>ADJUSTABLE PEDESTAL SD-S is made up of a base, screw ring, pedestal head and spacer tabs. Twist 4 ergonomic handles to adjust height anywhere between 1.25" - 1.75".</p>
	<p>ADJUSTABLE PEDESTALS SD-M, SD-L, SD-XL</p>	<p>SD-M ADJUSTABLE PEDESTAL - 1.75" - 2.95" SD-L ADJUSTABLE PEDESTAL - 2.95" - 5.9" SD-XL ADJUSTABLE PEDESTAL - 5.9" - 13.75" Each pedestal comes in one assembled piece with spacer tabs in a separate bag. Height adjustments can be made by twisting the ergonomic handles, using the hand tool or using the drill bit tool.</p>
	<p>SELF LEVELING HEAD DOWN (VIEW) SD-SLH OR SD-XL-SLH SELF LEVELING HEAD UP (VIEW)</p>	<p>SELF LEVELING HEAD has upper and lower pieces. Lower piece is locked onto the top of the SCREW HEAD. The upper piece of self leveling head is then put into the lower part of the head. SELF LEVELING HEAD is for use on applications with slope. The SELF LEVELING HEAD is self changing and adjusted to level under load. Correction of slope 0-7%.</p> <p>SELF LEVELING HEAD comes in two sizes. One size for the SD-01 pedestals and a larger size for the SD-M, SD-L and SD-XL pedestals</p>
	<p>8" EXTENDER SLEEVE XL-EXT</p>	<p>EXTENDER SLEEVE is used to increase the height range of SKYJACK PEDESTALS. EXTENDER SLEEVE is screwed into pedestal threads in BASE with the PEDESTAL HEAD being applied onto the top of the sleeve. If pedestals have larger height than 21.75" it is recommended to apply steel strapping to stabilize pedestals.</p>
	<p>REGULATION SHIM SD-SH2</p>	<p>REGULATION SHIM can be used to help compensate small differences in height of raised terrace pavers.</p>
	<p>SPACER TAB 3/16"</p>	<p>SPACER TAB to appoint installation gap dimension of 3/16". Spacer tabs snap onto pedestal head. Individual spacers can be removed for pedestal placement along patio perimeters.</p>
	<p>DECK JOIST ADAPTER SD-AD</p>	<p>DECK JOIST ADAPTER snaps onto the top of any adjustable pedestal to accommodate deck joists.</p>

### SUMMARY OF SKYJACK PEDESTAL SYSTEM COMPONENTS



skydeck  
— usa —

## PEDESTAL SD-XXS

### SKYJACK PEDESTALS

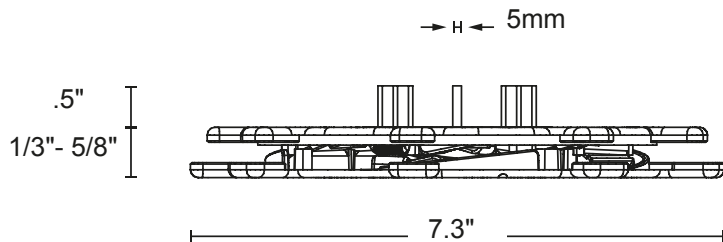
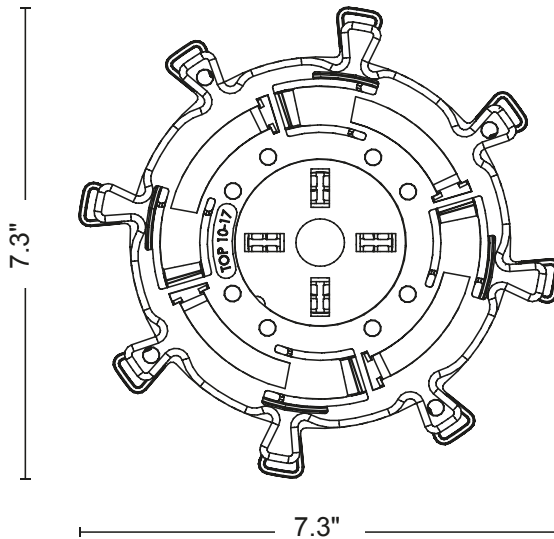
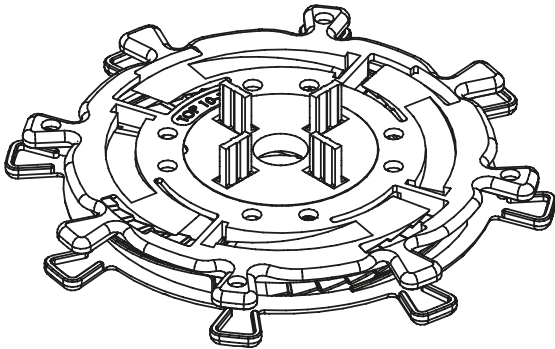
Adjustable Pedestal System by SKYDECK USA

[www.skydeckusa.com](http://www.skydeckusa.com)  
[info@skydeckusa.com](mailto:info@skydeckusa.com)

The SKYJACK ADJUSTABLE PEDESTAL SYSTEM offers varying height ranges from 1/3" up to 38".

SD-XXS Pedestal Components: Top screw and Bottom Screw labeled "top" and "bottom" sit on top of one another. The gap spacer snap onto the top piece. Height adjusts between 1/3" - 5/8"

SKYJACK ADJUSTABLE PEDESTALS allow for easy and efficient height adjustments and leveling of raised terraces. The width of the pedestal base provides sufficient stability for all construction with virtually any material paver or tile.



SKYJACK ADJUSTABLE PEDESTAL SD-XXS



skydeck  
— usa —

## PEDESTAL SD-XS

### SKYJACK PEDESTALS

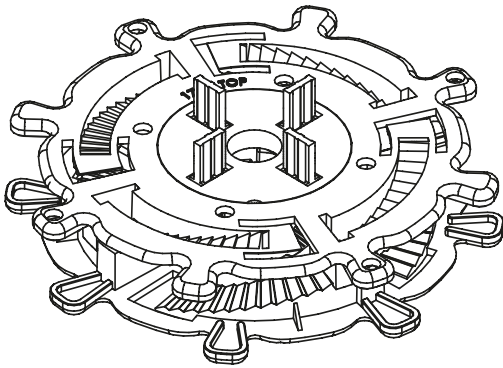
Adjustable Pedestal System by SKYDECK USA

[www.skydeckusa.com](http://www.skydeckusa.com)  
[info@skydeckusa.com](mailto:info@skydeckusa.com)

The SKYJACK ADJUSTABLE PEDESTAL SYSTEM offers varying height ranges from 5/8" up to 38".

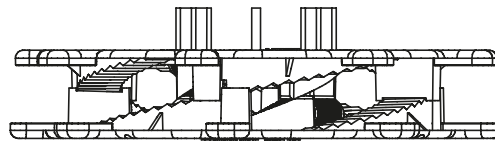
SD-XS Pedestal Components: Top screw and Bottom Screw labeled "top" and "bottom" sit on top of one another. The gap spacer snap onto the top piece.

SKYJACK ADJUSTABLE PEDESTALS allow for easy and efficient height adjustments and leveling of raised terraces. The width of the pedestal base provides sufficient stability for all construction with virtually any material paver or tile.

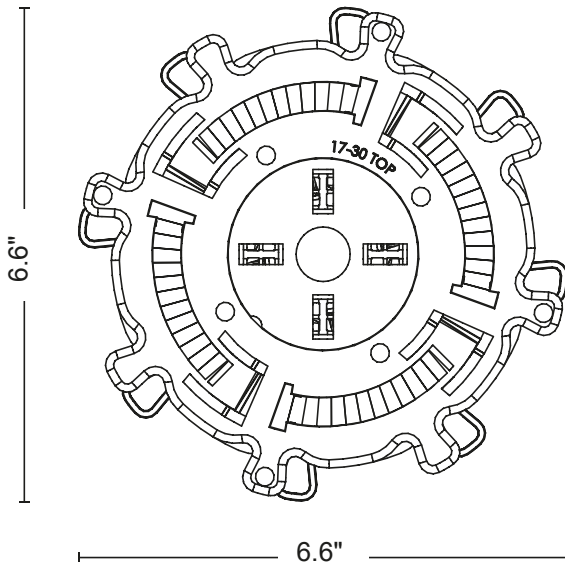


→ H ← 3/16" gap spacer

5/8" -  
1.25"



6.6"



SKYJACK ADJUSTABLE PEDESTAL SD-XS



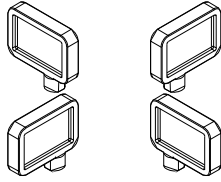
**skydeck**  
— usa —

## PEDESTAL SD-S

### SKYJACK PEDESTALS

Adjustable Pedestal System by SKYDECK USA

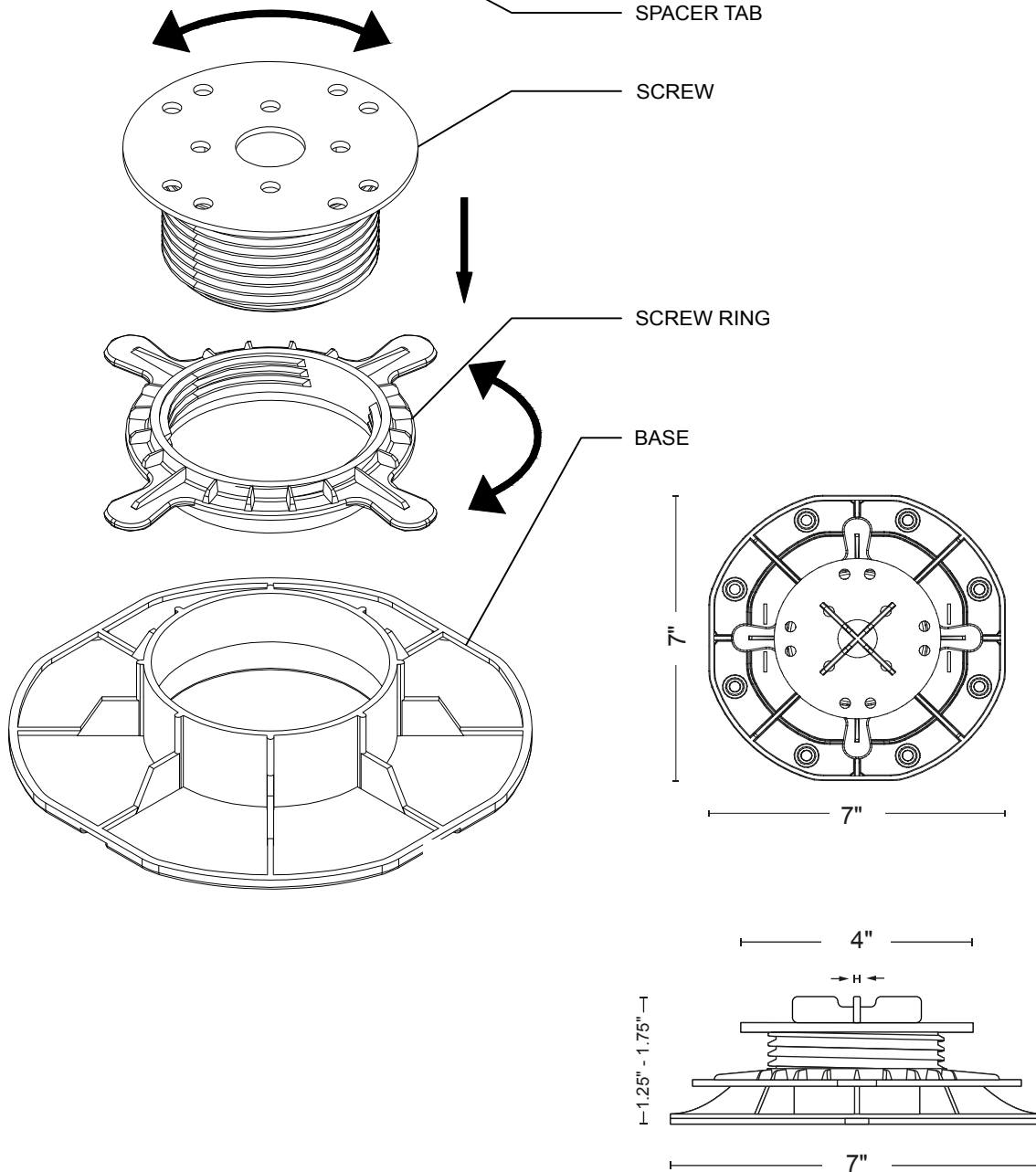
[www.skydeckusa.com](http://www.skydeckusa.com)  
[info@skydeckusa.com](mailto:info@skydeckusa.com)



The SKYJACK ADJUSTABLE PEDESTAL SYSTEM offers varying height ranges between 5/8" - 13.75"

Pedestal Components: BASE - SCREW RING - SCREW - SPACER TAB

SKYJACK ADJUSTABLE PEDESTALS allow for easy and efficient height adjustments and leveling of raised terraces. The width of the pedestal base provides sufficient stability for all construction.



SKYJACK ADJUSTABLE PEDESTAL SD-S



skydeck  
— usa —

# ADJUSTABLE PEDESTAL

SD-M

## SKYJACK PEDESTALS

Adjustable Pedestal System by SKYDECK USA

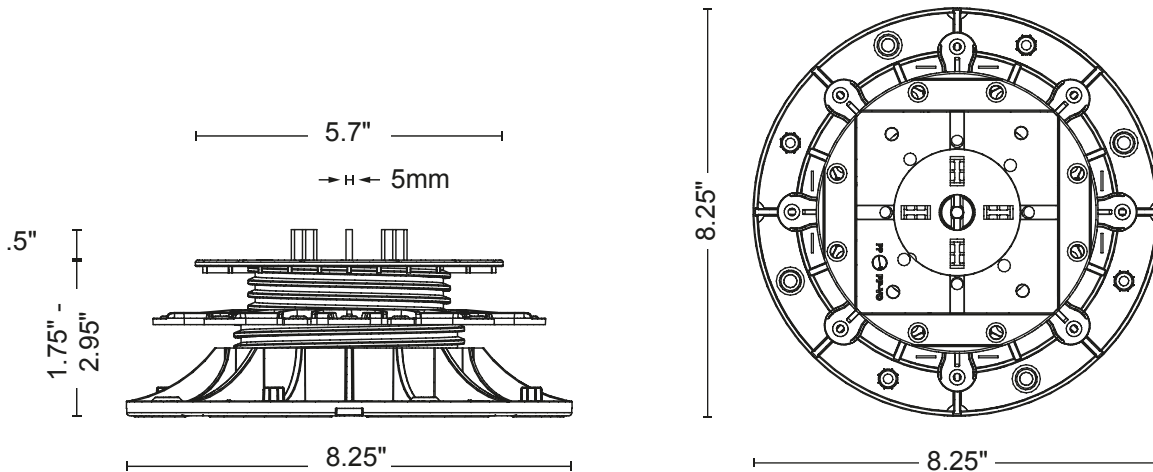
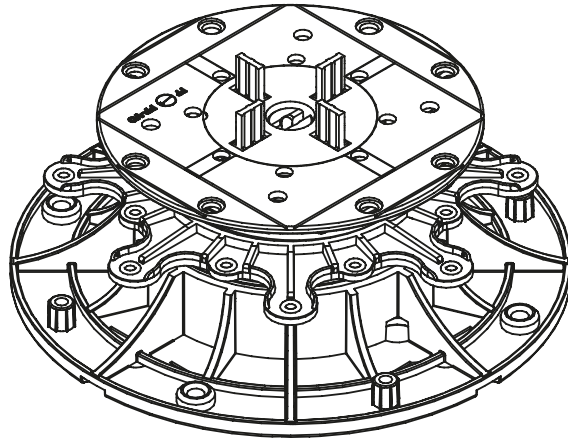
www.skydeckusa.com  
info@skydeckusa.com

# ADJUSTABLE PEDESTAL 1.75" - 2.95"

The SKYJACK ADJUSTABLE PEDESTAL SYSTEM offers varying height ranges between 5/8" - 13.75"

Pedestal Components: BASE - SCREW RING - SCREW - SPACER TAB

SKYJACK ADJUSTABLE PEDESTALS allow for easy and efficient height adjustments and leveling of raised terraces. The width of the pedestal base provides sufficient stability for all construction.



SKYJACK ADJUSTABLE PEDESTAL SD-M



skydeck  
— usa —

# ADJUSTABLE PEDESTAL

SD-L

## SKYJACK PEDESTALS

Adjustable Pedestal System by SKYDECK USA

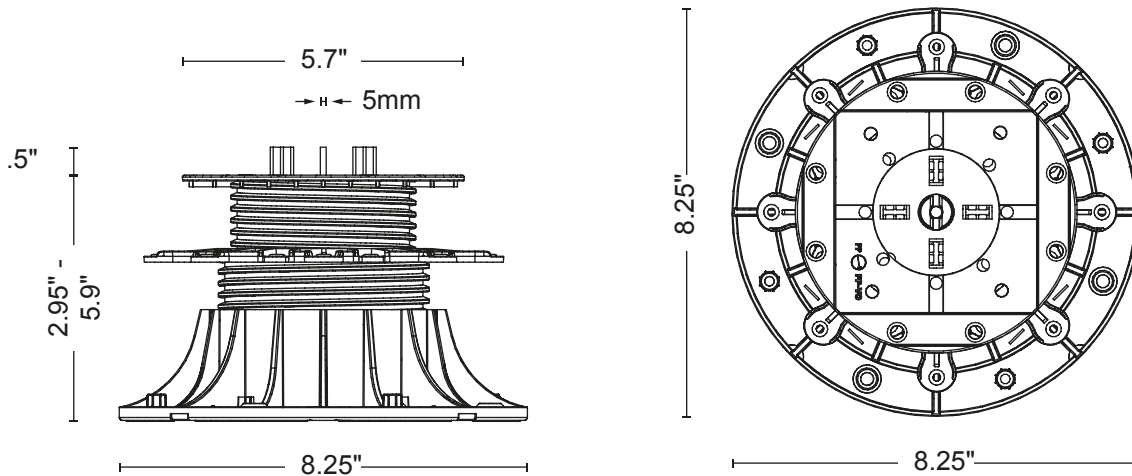
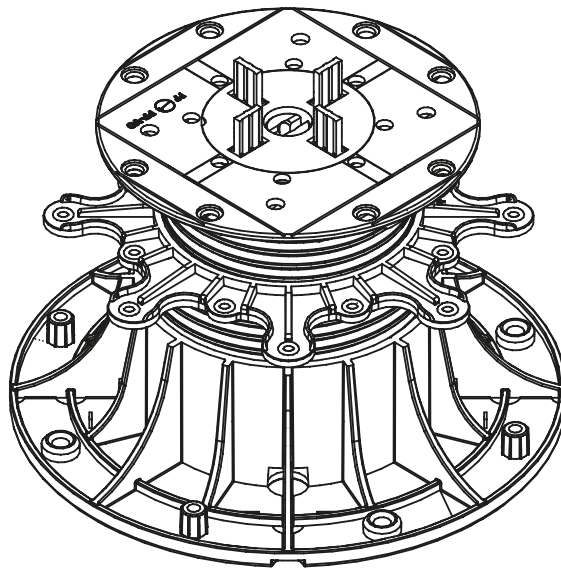
www.skydeckusa.com  
info@skydeckusa.com

# ADJUSTABLE PEDESTAL 2.95" - 5.9"

The SKYJACK ADJUSTABLE PEDESTAL SYSTEM offers varying height ranges between 5/8" - 13.75"

Pedestal Components: BASE - SCREW RING - SCREW - SPACER TAB

SKYJACK ADJUSTABLE PEDESTALS allow for easy and efficient height adjustments and leveling of raised terraces. The width of the pedestal base provides sufficient stability for all construction.



SKYJACK ADJUSTABLE PEDESTAL SD-L



skydeck  
— usa —

# ADJUSTABLE PEDESTAL

SD-XL

## SKYJACK PEDESTALS

Adjustable Pedestal System by SKYDECK USA

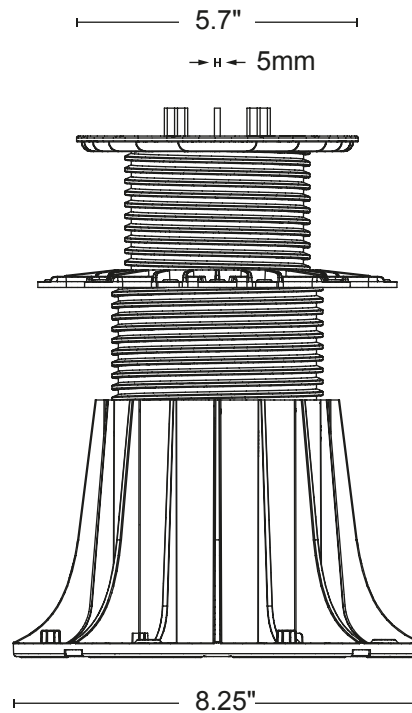
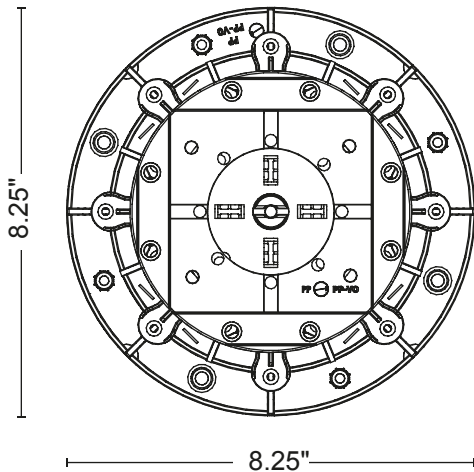
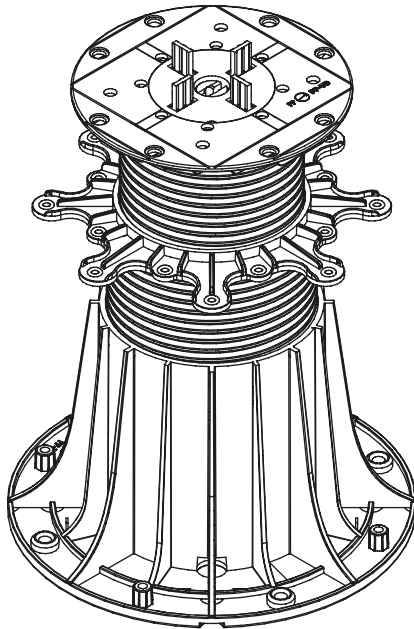
www.skydeckusa.com  
info@skydeckusa.com

# ADJUSTABLE PEDESTAL 5.9" - 13.75"

The SKYJACK ADJUSTABLE PEDESTAL SYSTEM offers varying height ranges between 5/8" - 13.75"

Pedestal Components: BASE - SCREW RING - SCREW - SPACER TAB

SKYJACK ADJUSTABLE PEDESTALS allow for easy and efficient height adjustments and leveling of raised terraces. The width of the pedestal base provides sufficient stability for all construction.



SKYJACK ADJUSTABLE PEDESTAL SD-XL





**skydeck  
usa**

## REGULATION SHIM

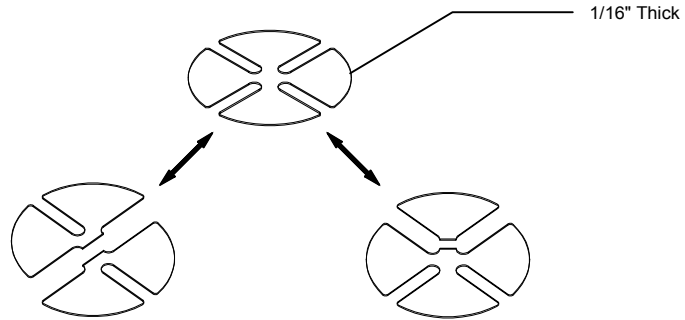
SD-SH2 and SD-XL-SH2

## SKYJACK PEDESTALS

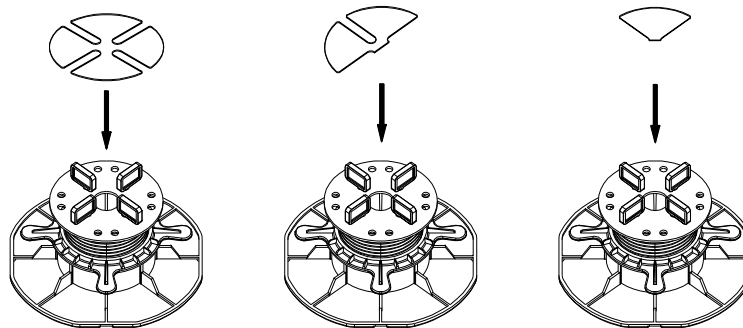
Adjustable Pedestal System by SKYDECK USA

[www.skydeckusa.com](http://www.skydeckusa.com)  
[info@skydeckusa.com](mailto:info@skydeckusa.com)

REGULATION SHIMS can be used to eliminate uneven pavers and to compensate small differences in height of terrace pavers.

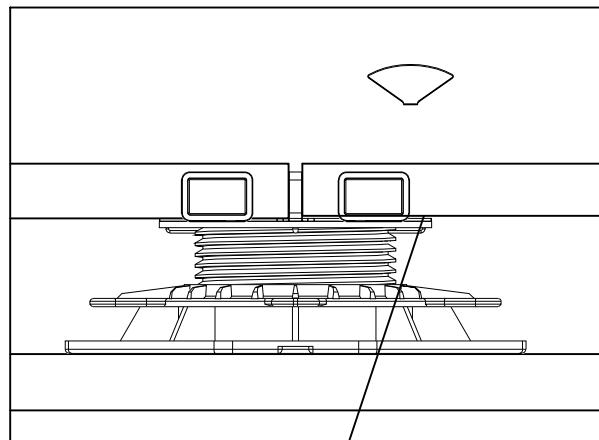


REGULATION SHIMS can be easily cut to fit to use just halves or quarters.



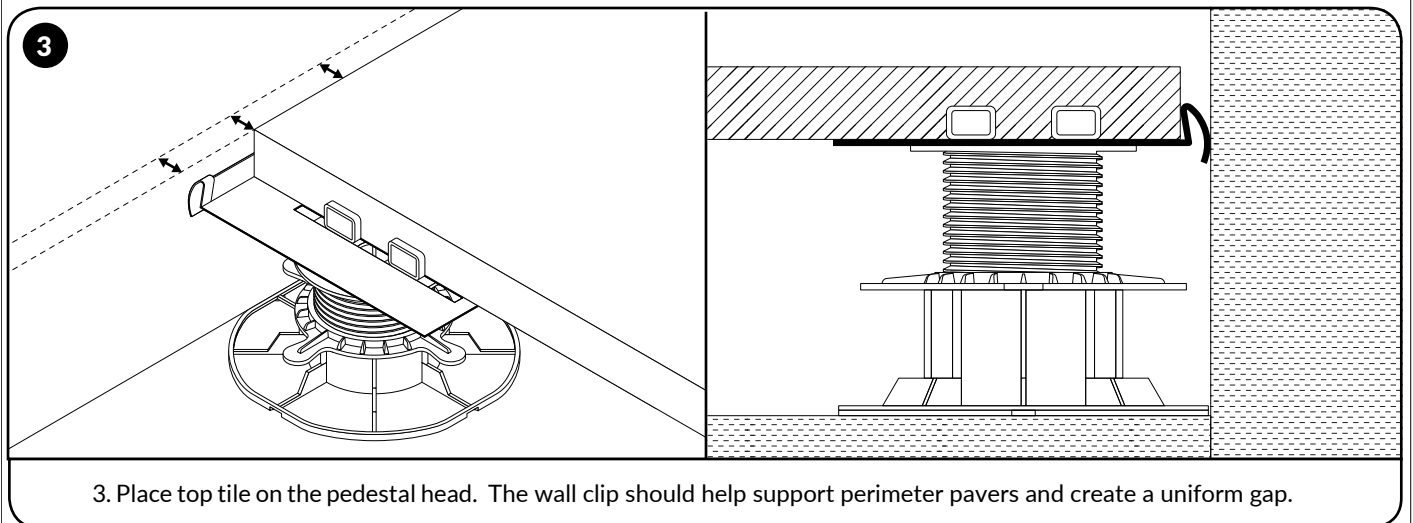
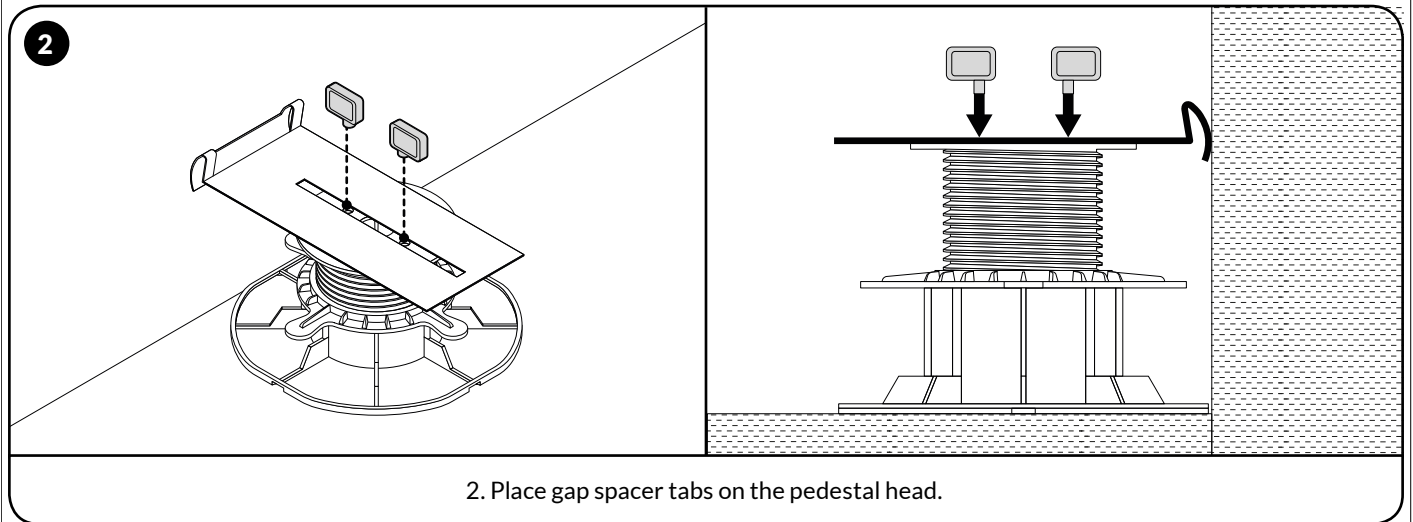
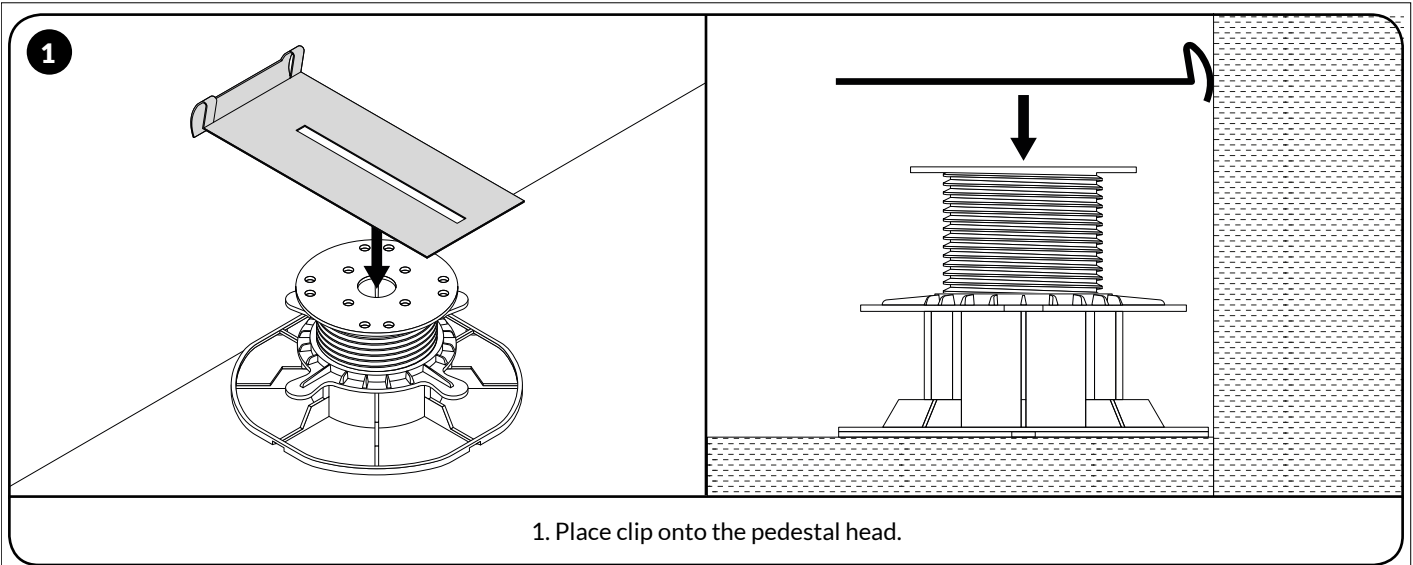
SD-SH2 shims should be used with SD-00 and SD-01 pedestals.

SD-XL-SH2 shims should be used with SD-0.5, SD-M, SD-L and SD-XL pedestals.



REGULATION SHIM

SKYJACK REGULATION SHIM



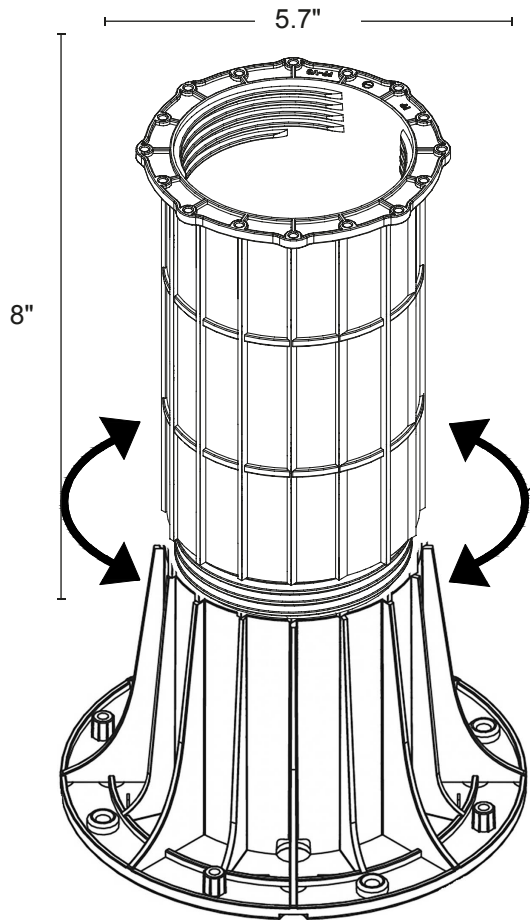


**skydeck  
usa**

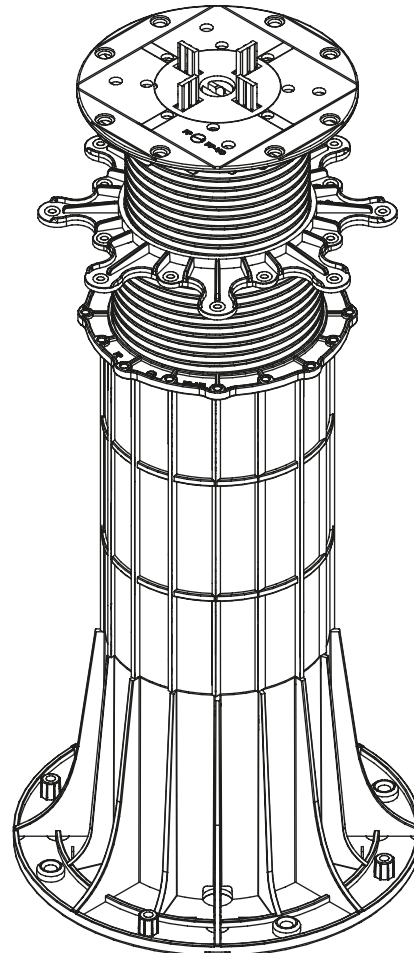
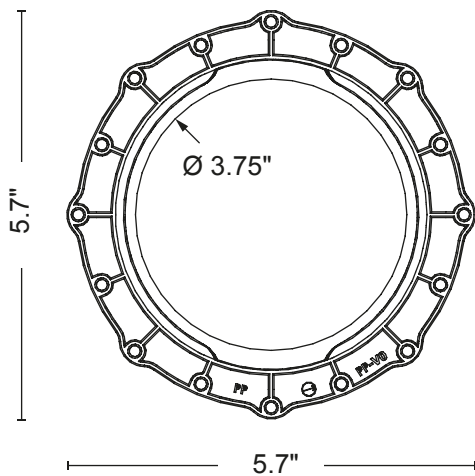
**EXTENDER  
SLEEVE**  
SD-XL-EXT

**SKYJACK PEDESTALS**  
Adjustable Pedestal System by SKYDECK USA  
  
www.skydeckusa.com  
info@skydeckusa.com

EXTENDER SLEEVE is used to increase the height range of SD-XL SKYJACK PEDESTALS. EXTENDER SLEEVE is screwed into pedestal BASE and onto the top is applied the SCREW HEAD. If pedestals have larger height than 21.75" it is recommended to use skydeck usa steel strapping system to stabilize pedestals.



EXTENDER SLEEVE must be screwed into pedestals BASE.



SKYJACK EXTENDER SLEEVE - SD-XL-EXT



**skydeck**  
— Usa —

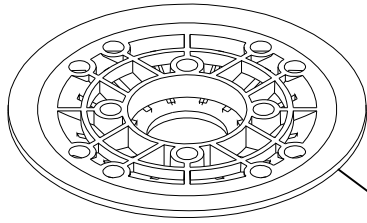
## PEDESTAL SD-S+SD-SLH

### SKYJACK PEDESTALS

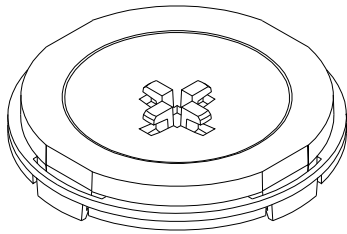
Adjustable Pedestal System by SKYDECK USA

[www.skydeckusa.com](http://www.skydeckusa.com)  
[info@skydeckusa.com](mailto:info@skydeckusa.com)

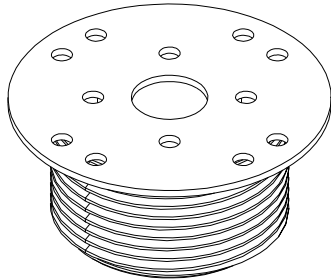
SKYJACK SELF LEVELING HEAD attaches to the top of the pedestal screw and can be utilized on all the different pedestal sizes. SKY JACK PEDESTALS with SELF LEVELING HEADS help compensate for terraces with sloped applications.



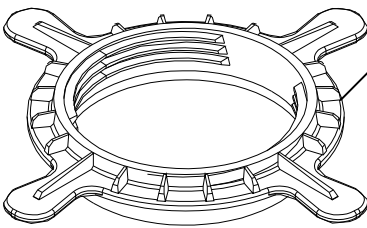
SELF LEVELING HEAD, up



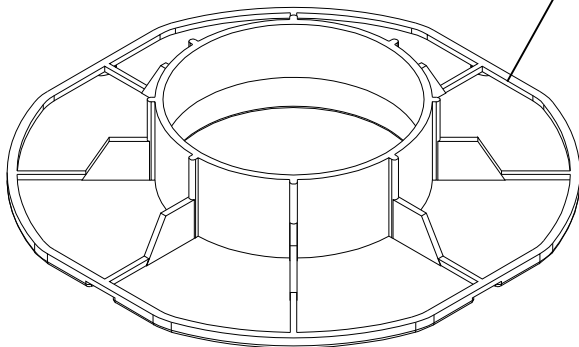
SELF LEVELING HEAD, down



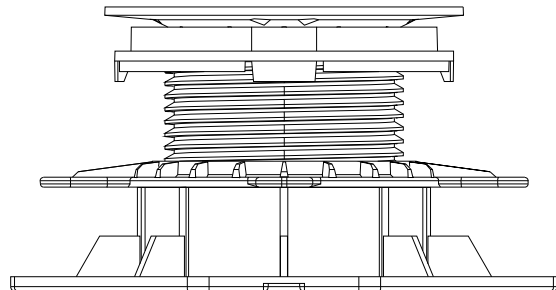
SCREW



SCREW RING



BASE



SKYJACK ADJUSTABLE PEDESTALS SD-S + SD-SLH SELF LEVELING HEAD



**skydeck**  
**usa**

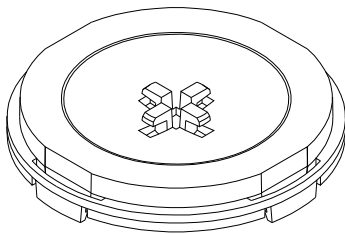
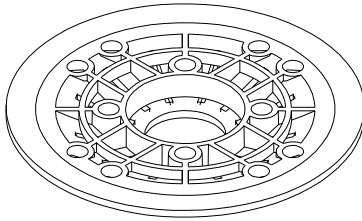
## SELF LEVELING HEAD

SD-SLH and SD-XL-SLH

## SKYJACK PEDESTALS

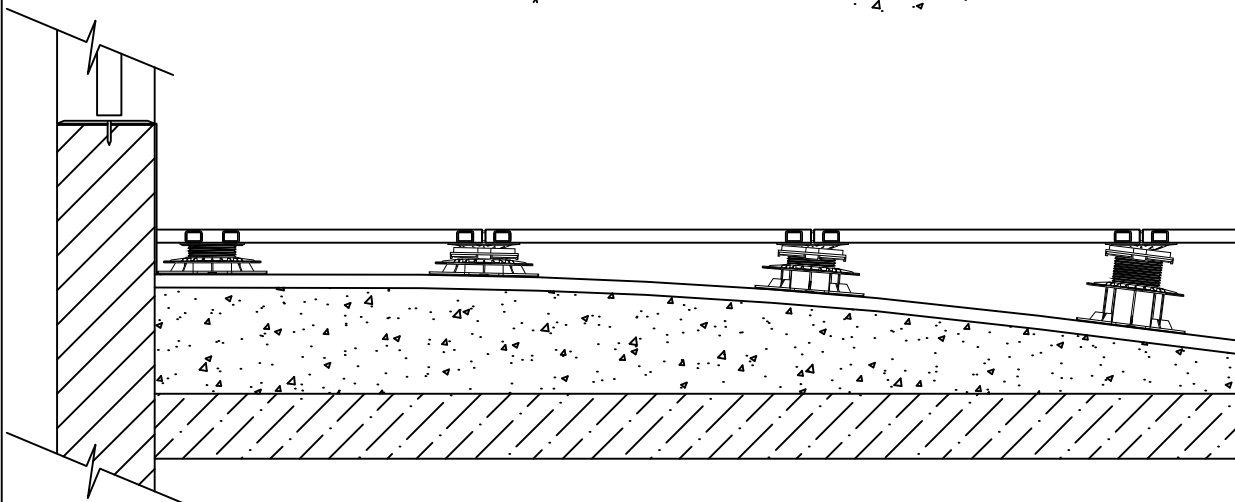
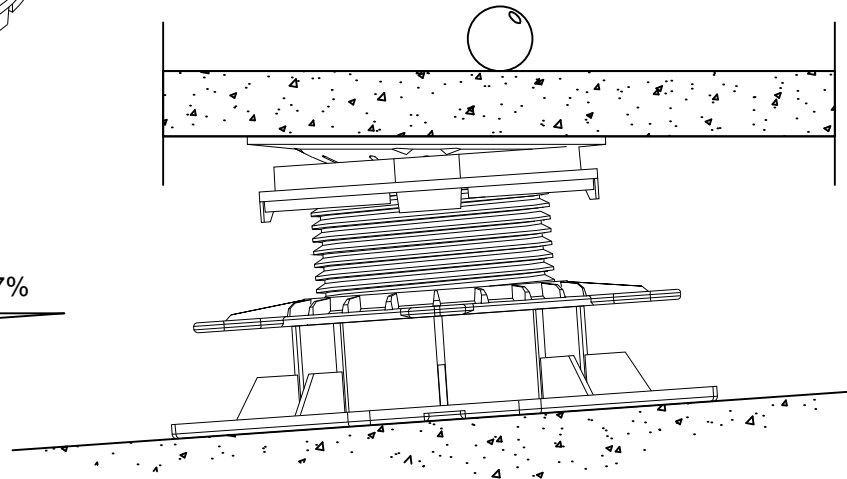
Adjustable Pedestal System by SKYDECK USA

[www.skydeckusa.com](http://www.skydeckusa.com)  
[info@skydeckusa.com](mailto:info@skydeckusa.com)



SKYJACK SELF LEVELING HEAD has upper and lower pieces. Lower piece is put onto the SCREW and locks, but upper piece is put in lower part of the head. The SELF LEVELING HEAD is used for installations where slope is present. The SELF LEVELING HEAD automatically adjusts to be level under applied loads.

correction of slope 0-7%



SKYJACK SELF LEVELING HEAD - SD-SLH

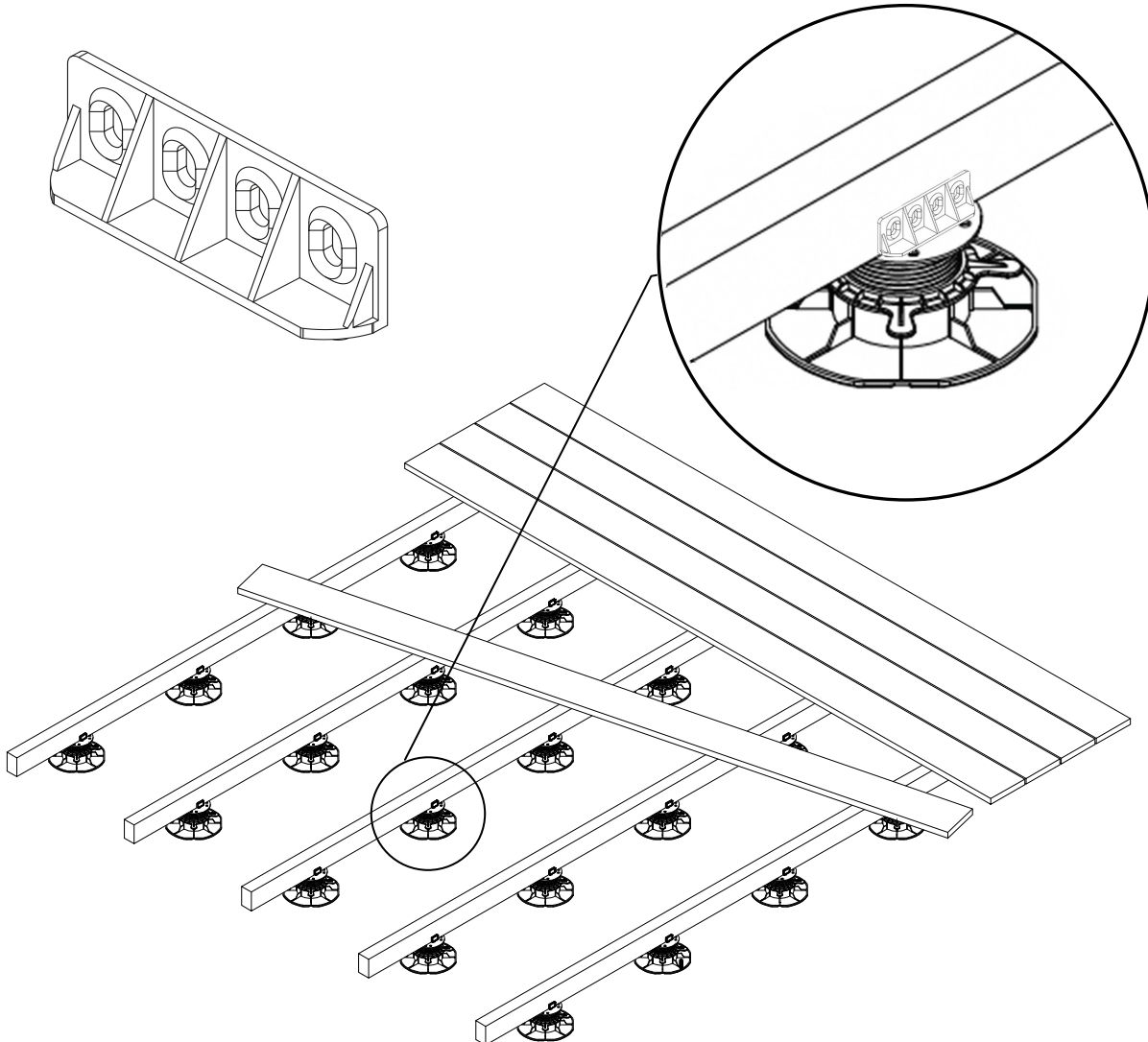


**skydeck**  
— Usa —

**DECK JOIST  
ADAPTER**  
SD-AD

**SKYJACK PEDESTALS**  
Adjustable Pedestal System by SKYDECK USA

[www.skydeckusa.com](http://www.skydeckusa.com)  
[info@skydeckusa.com](mailto:info@skydeckusa.com)



**COMMENTS:**

All dimensions and distances are approximate and are not grounds for implementation of the project due to differences in materials. The final dimensions depend on the chosen materials and their cross-sections.

**COMMENTS:**

1. The installation must be done accordingly with construction.
2. Unless stated drawings are without a scale.
3. The decking must strictly adhere to local codes and structural engineer's design.
4. More information at [www.skydeckusa.com](http://www.skydeckusa.com) or send questions to [info@skydeckusa.com](mailto:info@skydeckusa.com)

**SKYJACK DECK JOIST ADAPTER SD-AD**



**skydeck**  
— USA —

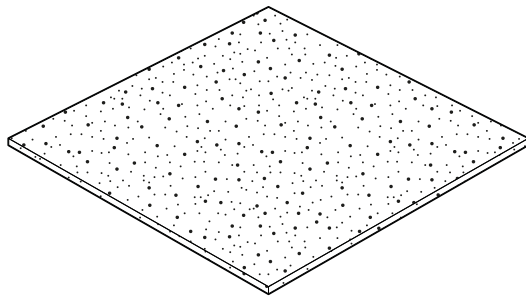
**Rubber Protective Pad**  
SD-PP

**SKYJACK PEDESTALS**

Adjustable Pedestal System by SKYDECK USA

www.skydeckusa.com  
info@skydeckusa.com

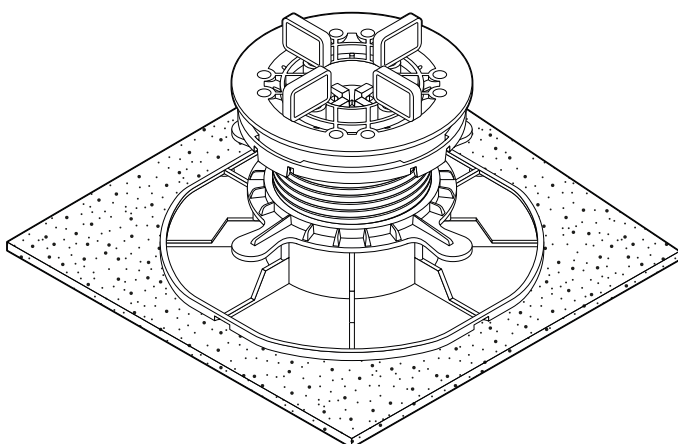
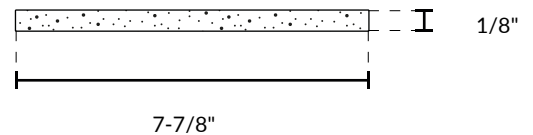
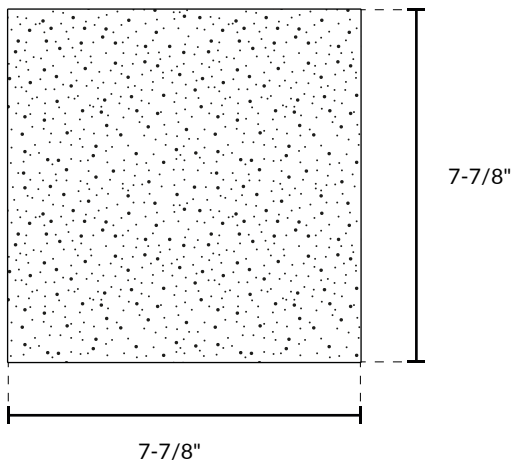
Rubber Protective Pads can be used underneath the pedestals to protect the roof membrane. We always recommend the use of rubber protection pads to avoid the roofing material adhering to the pedestal base with high roof temperatures. Rubber Protective Pads also mute help dampen sound when using the terrace. Rubber protective pads are water and weather resistant.



**Technical data**

Size:  
Width/Length: 7-7/8"  
Thickness: 1/8"

Material: SBR, polyurethane glue



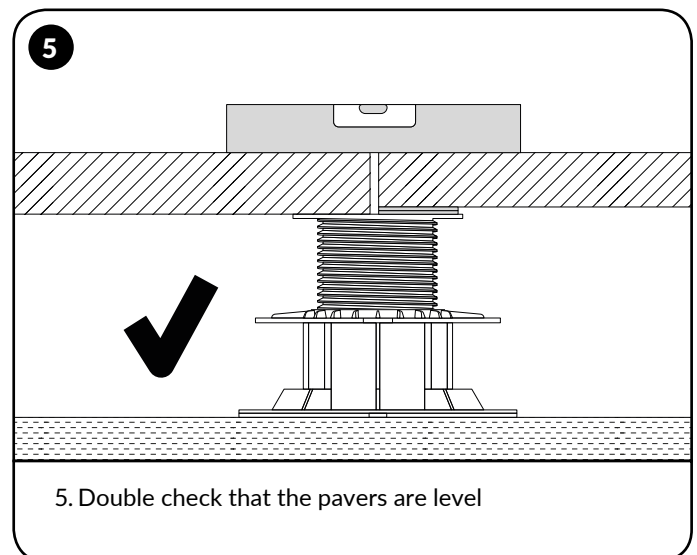
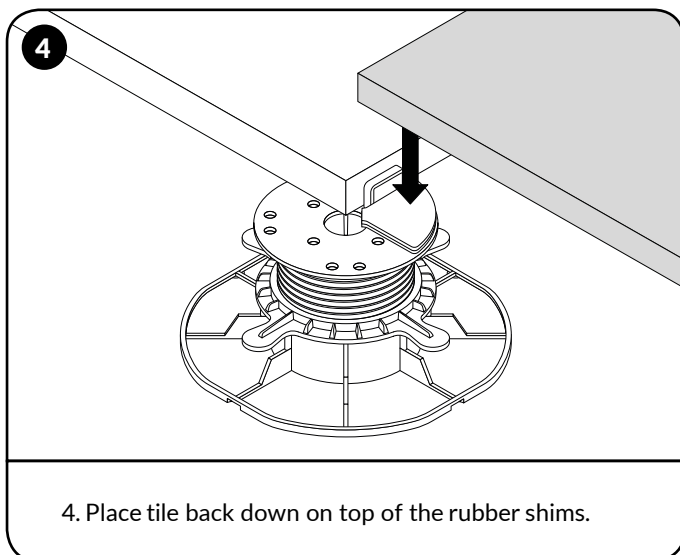
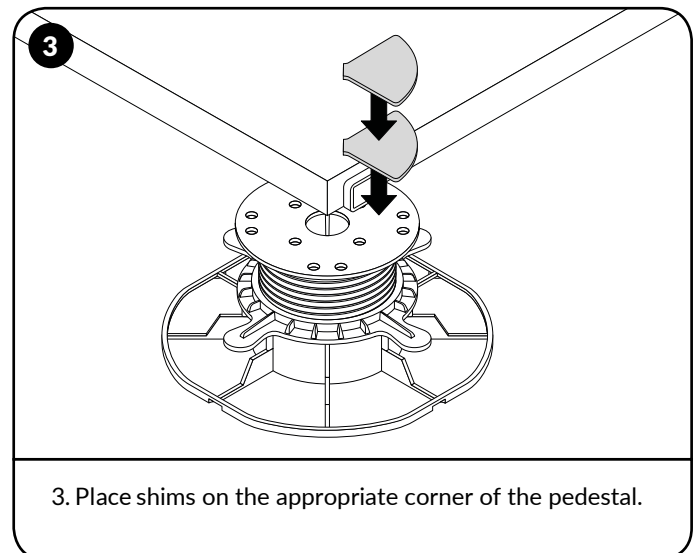
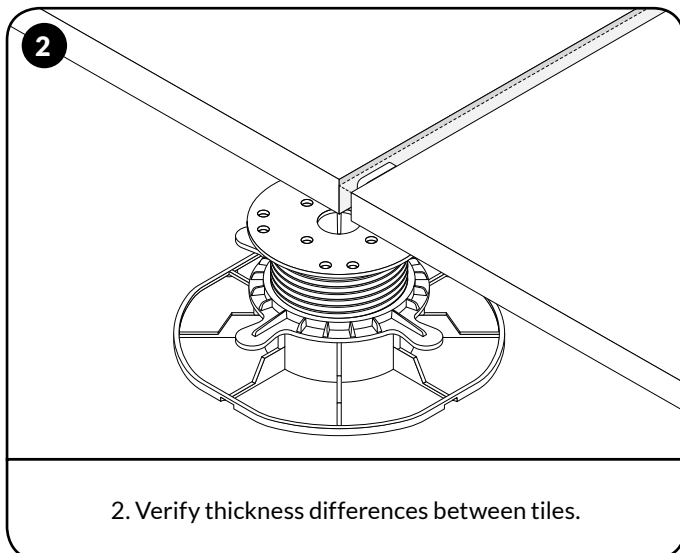
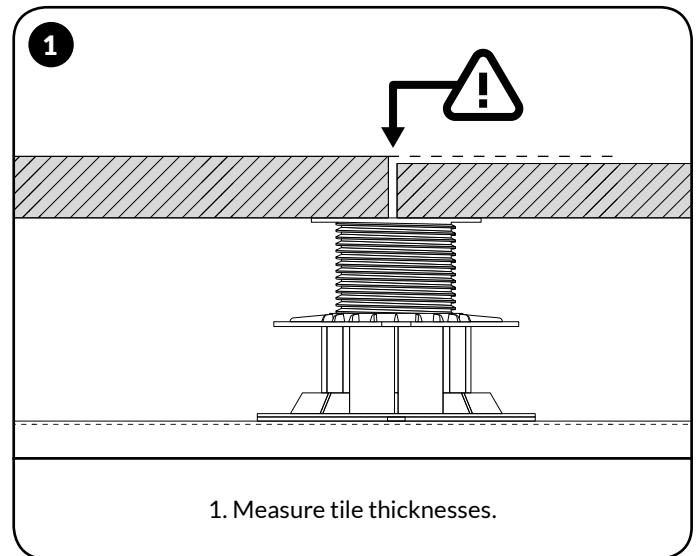
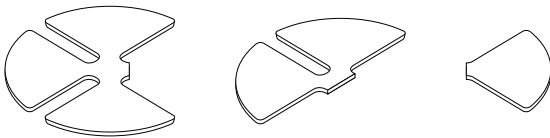
**Noise reduction**

Rubber protective pads help dampen sound when walking on the patio.



▼ **Rubber shims**

In situations where there are minor differences in tile thickness, rubber shims can be used to level the pavers. First, place shims on top of the lower paver. Using a level, stack shims until the shims are level with adjacent paver. Then lift the corner of the lower paver and place the shims on the appropriate corner of the pedestal.







**skydeck**  
— Usa —

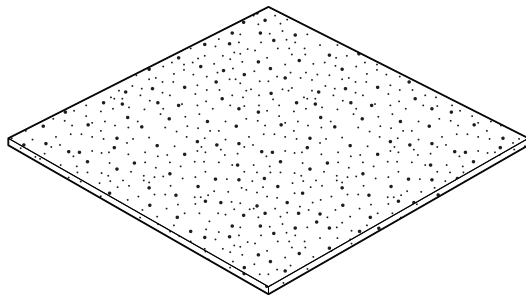
**Rubber Protective Pad**  
SD-PP

**SKYJACK PEDESTALS**

Adjustable Pedestal System by SKYDECK USA

www.skydeckusa.com  
info@skydeckusa.com

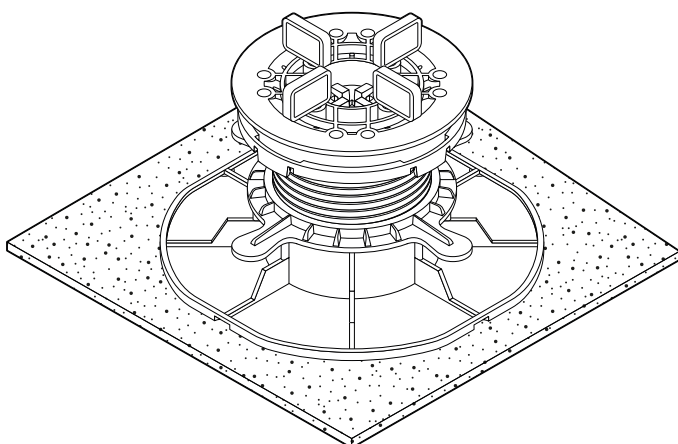
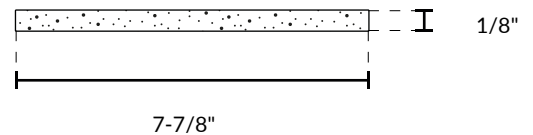
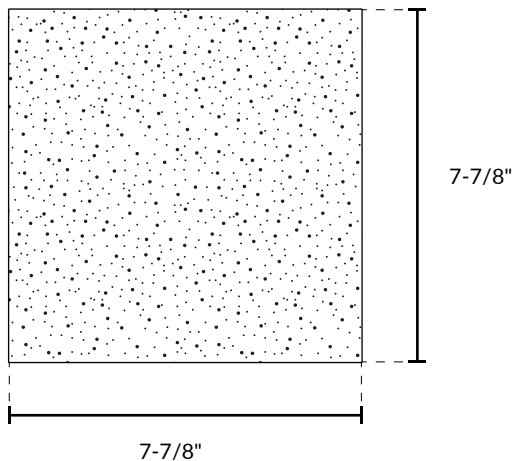
Rubber Protective Pads can be used underneath the pedestals to protect the roof membrane. We always recommend the use of rubber protection pads to avoid the roofing material adhering to the pedestal base with high roof temperatures. Rubber Protective Pads also mute help dampen sound when using the terrace. Rubber protective pads are water and weather resistant.



**Technical data**

Size:  
Width/Length: 7-7/8"  
Thickness: 1/8"

Material: SBR, polyurethane glue



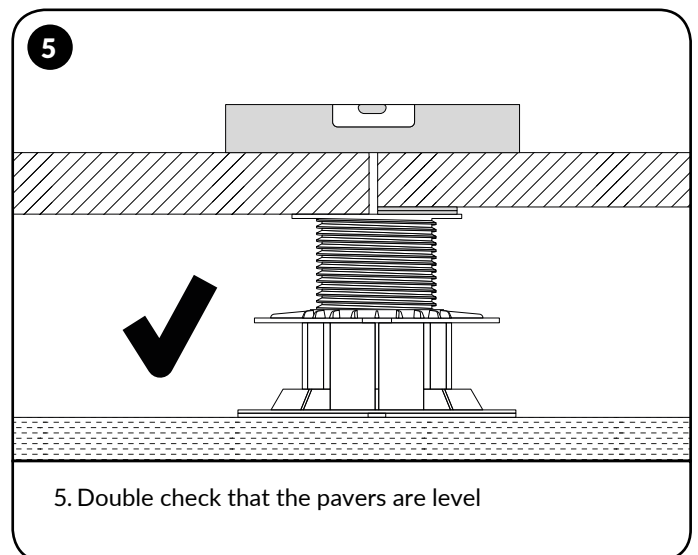
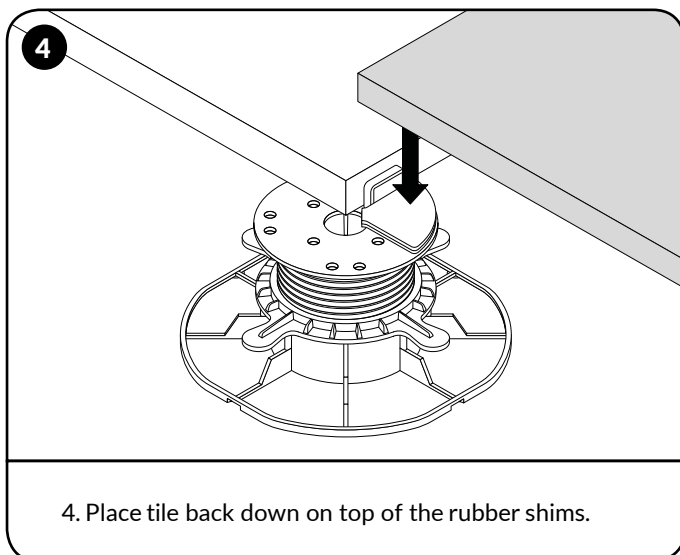
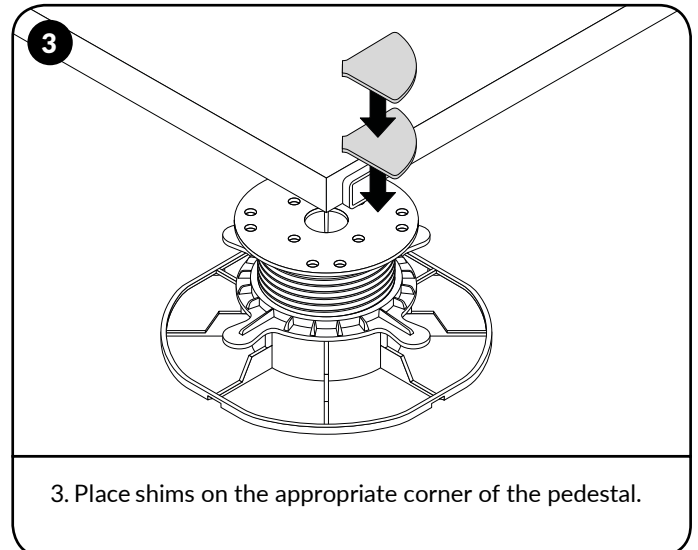
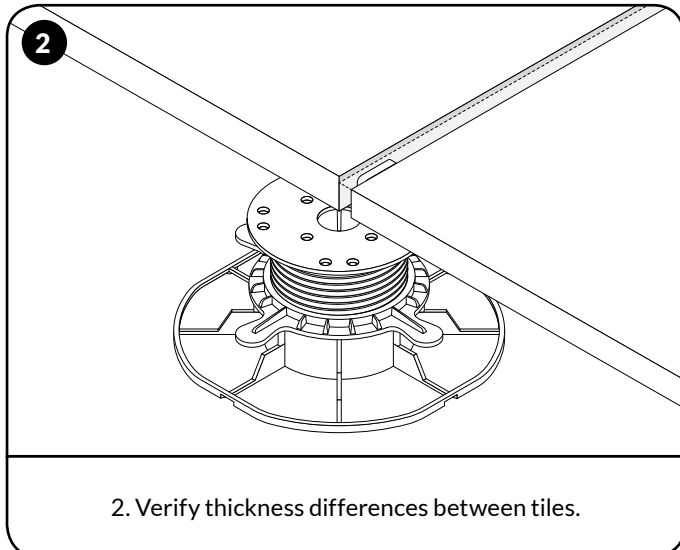
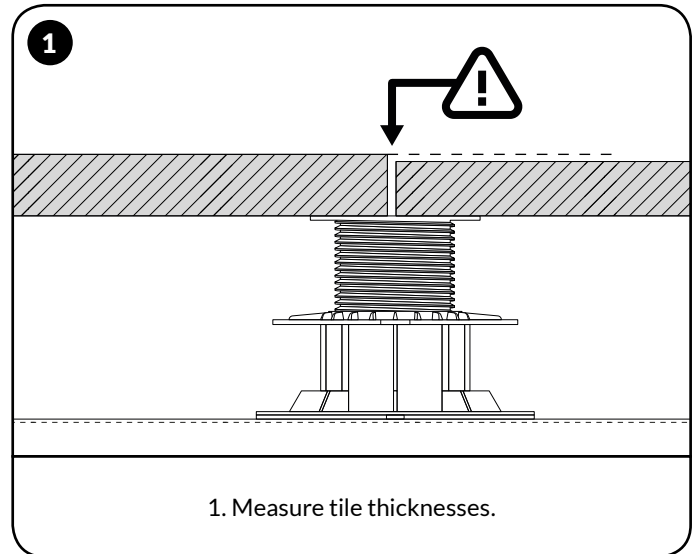
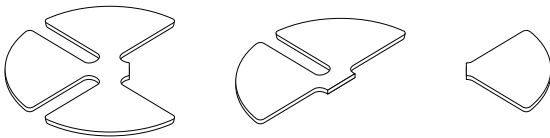
**Noise reduction**

Rubber protective pads help dampen sound when walking on the patio.



▼ **Rubber shims**

In situations where there are minor differences in tile thickness, rubber shims can be used to level the pavers. First, place shims on top of the lower paver. Using a level, stack shims until the shims are level with adjacent paver. Then lift the corner of the lower paver and place the shims on the appropriate corner of the pedestal.



# PEDESTAL WEIGHT PERFORMANCE



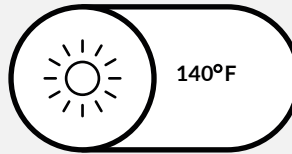
## Acceptable weight load

SkyJack pedestals have a weight bearing capacity of 2,150 lbs

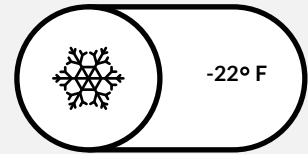


## Temperature resistance

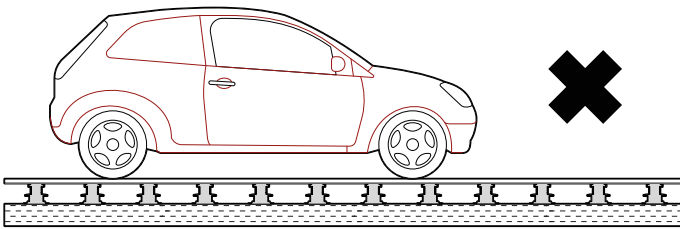
SkyJack pedestals can withstand extreme temperatures



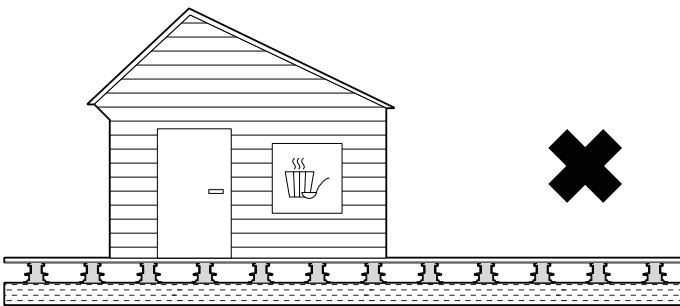
140°F



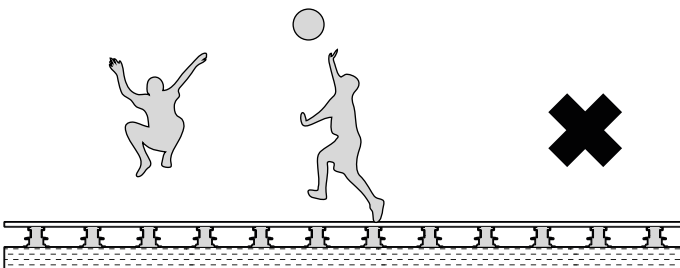
-22° F



◀ | It is forbidden to drive any vehicle on the terrace.



◀ | It is forbidden to place any heavy object on the terrace.

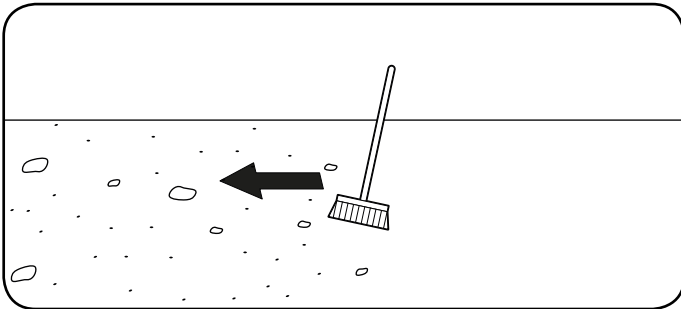
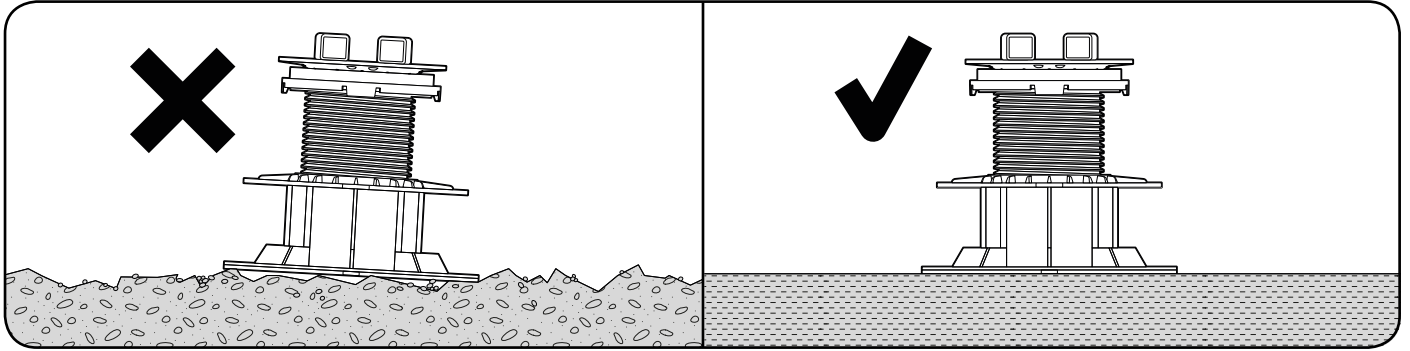


◀ | It is forbidden to run or jump on the terrace.

# PEDESTAL FOUNDATION NOTES

## ▼ Flat surface

The foundation on which pedestals are placed must be flat and provide stability for the pedestals.

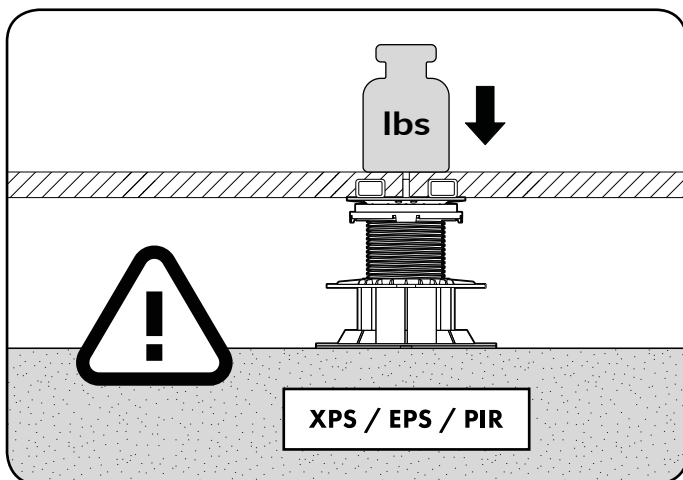


## ◀ Clean surface

Before placing pedestals. Clean terrace surface from any unwanted elements. Do not place pedestals on dirt and debris.

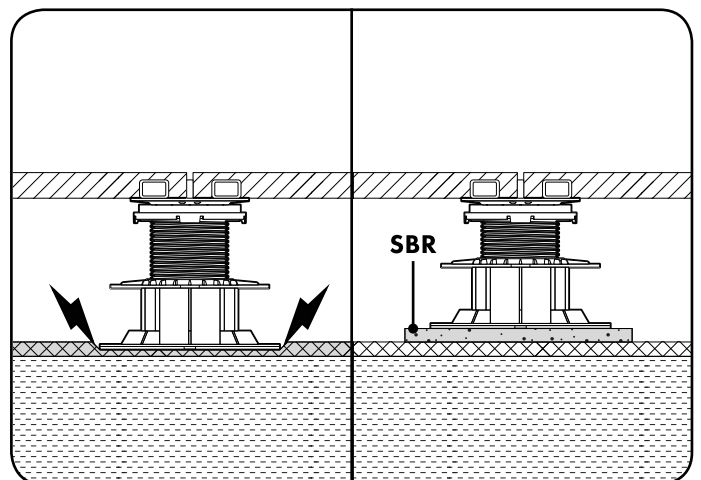
## ▼ Foundation weight loading

Pedestals can be placed on the 60 psi rigid insulation board or similar. Remember to check foundation weight loading performance.



## ▼ Sensitive surface protection

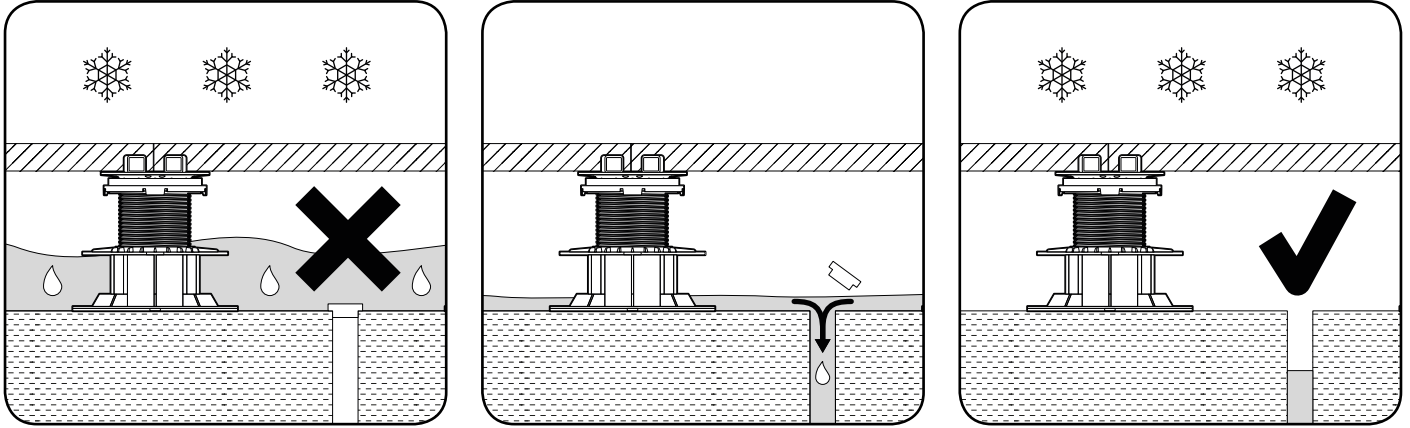
In order to prevent pedestals adhering to the roofing membrane or causing damage, rubber protective pads are recommended underneath the pedestals.



# IMPORTANT INFORMATION REGARDING WATER

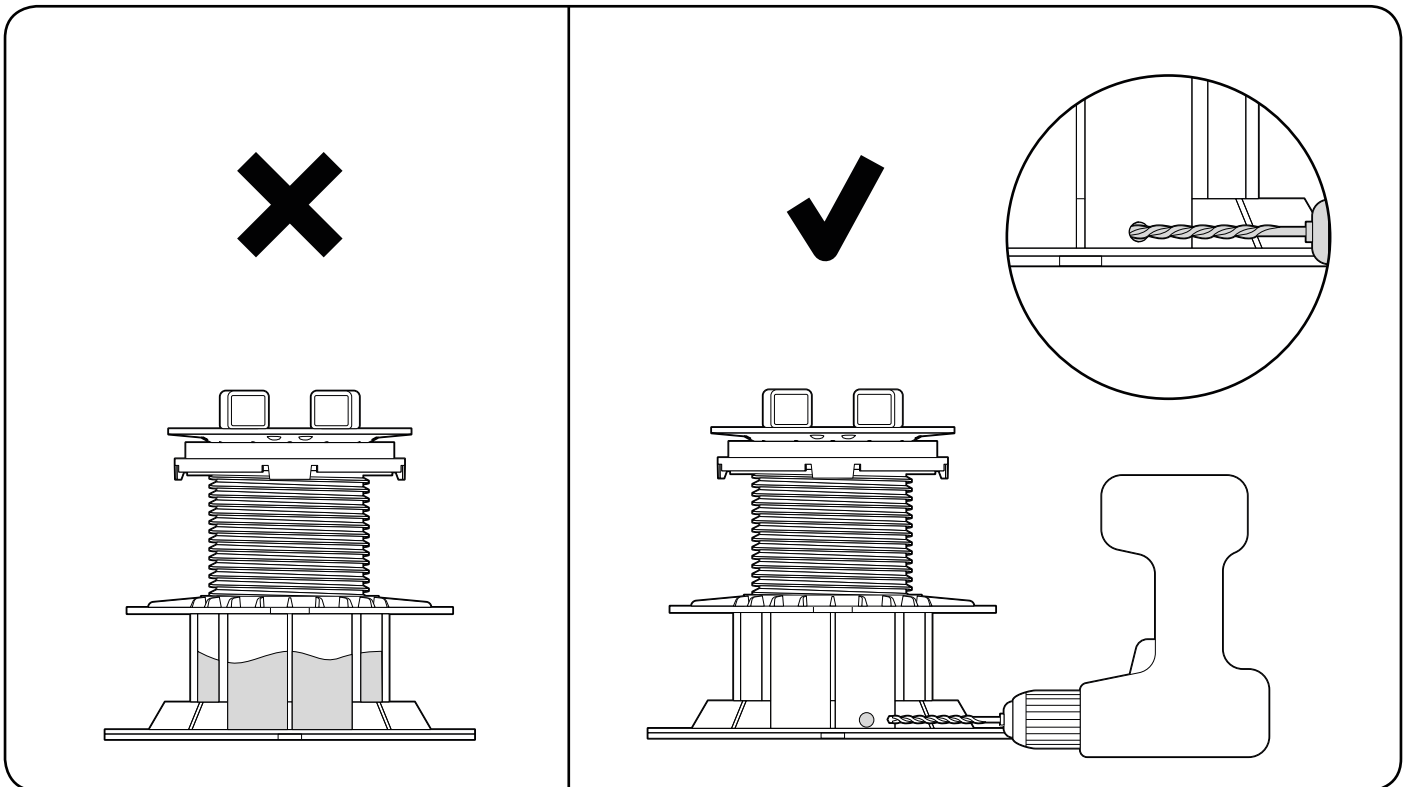
## ▼ Pedestals must be able to drain all water

Pedestals that are not allowed proper water drainage may crack during freezing temperatures. Routinely check that pedestals are not collecting water and that they have not adhered to the roofing membrane. To avoid adhering, use rubber protective pads underneath each pedestal.



## ▼ Water inside pedestals

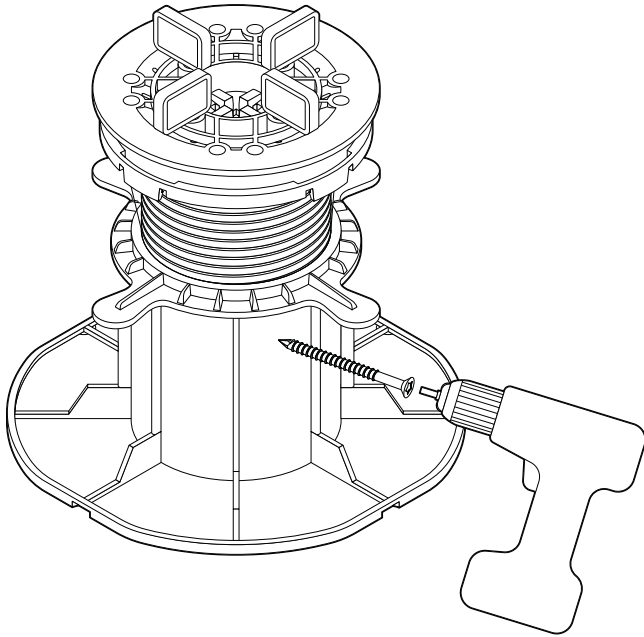
If the pedestals have water collecting inside them, drill weep holes at the bottom of the pedestals to allow the water to freely flow out.



# PEDESTAL LOCKING

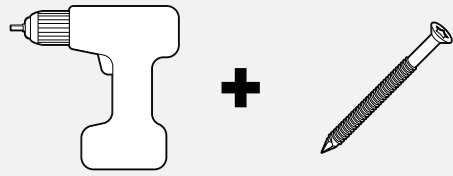
## ▼ Lock pedestals in place

Certain roofs experience vibrations that can cause the pedestals to slowly move. To prevent this, place a screw through the base and screw ring to lock it into place.



### Tools:

First drill the hole and then use screw with screwdriver.

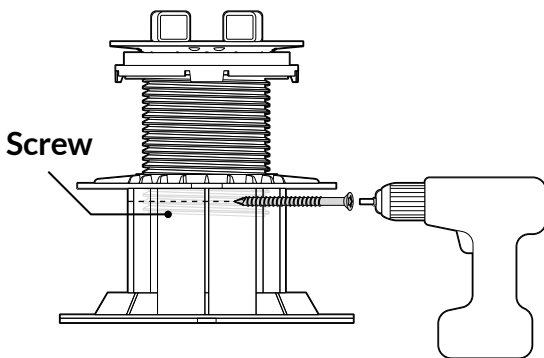


Screwdriver

Screws

## ▼ Pedestal height lock

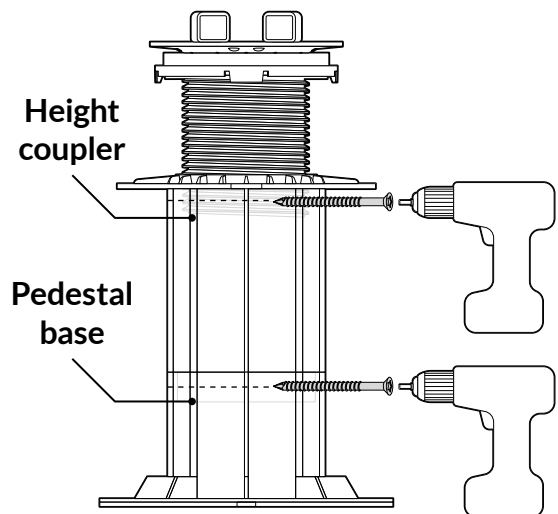
Drill inside the pedestal base, screw ring and screw then drive screw inside to lock pedestal height.



Screw

## ▼ Pedestal lock with height extender

When locking the height of pedestals that use height extenders, place a screw into both top and at each intersection of the height extender.



Height coupler

Pedestal base

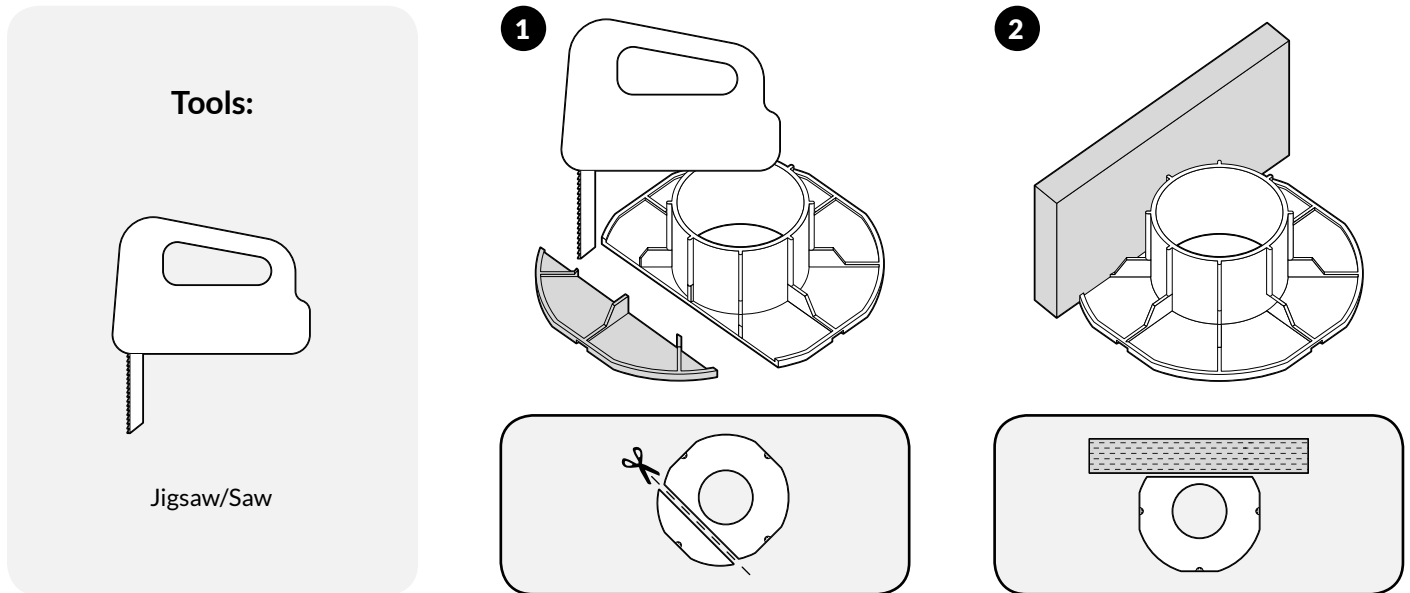


Remember to check if pedestal height is adjusted correctly before locking them.

# CUTTING PEDESTAL BASE

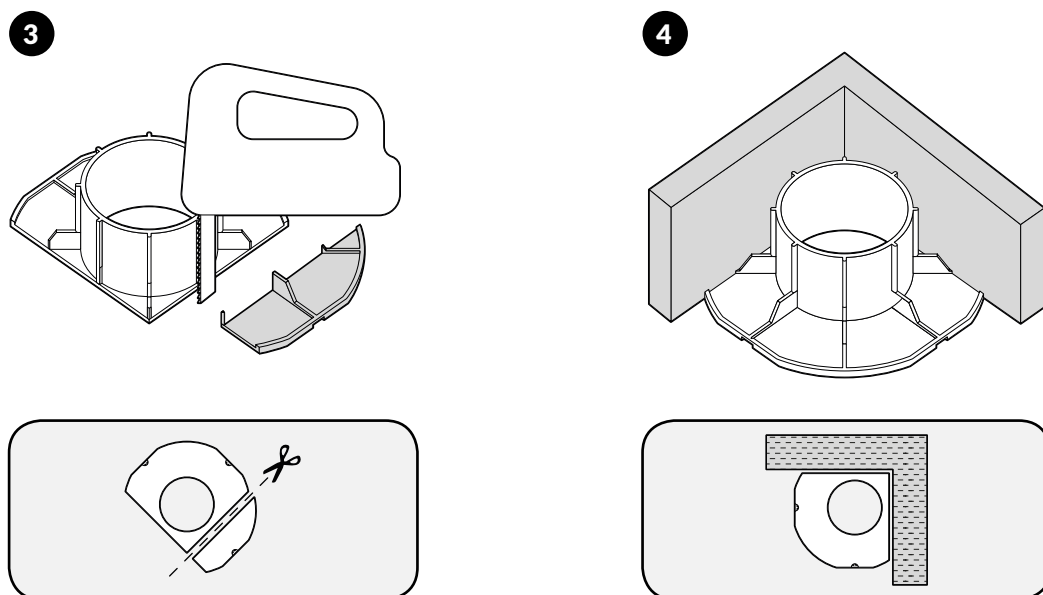
## ▼ Pedestals may be cut along the wall

Along parapet walls, the pedestal base may be cut to allow the pedestal to sit closer to the wall. Using a saw, cut along the perforated line on the bottom side of the pedestal. Please note that the sharp edge after cutting must be protected with a rubber protective pad.



## ▼ Cutting pedestal base in corners

The pedestal base may be cut to fit more closely into corners. Please note that rubber protective pads must be used underneath to protect the roof from the sharp cut edges of the pedestal.

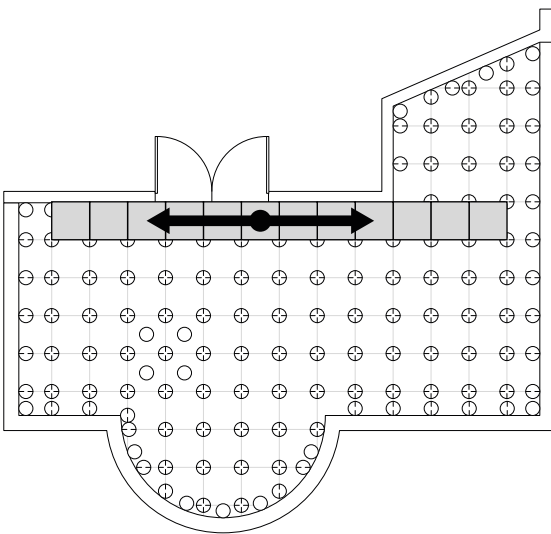


# INSTALLATION - PLACEMENT OF FIRST PEDESTALS

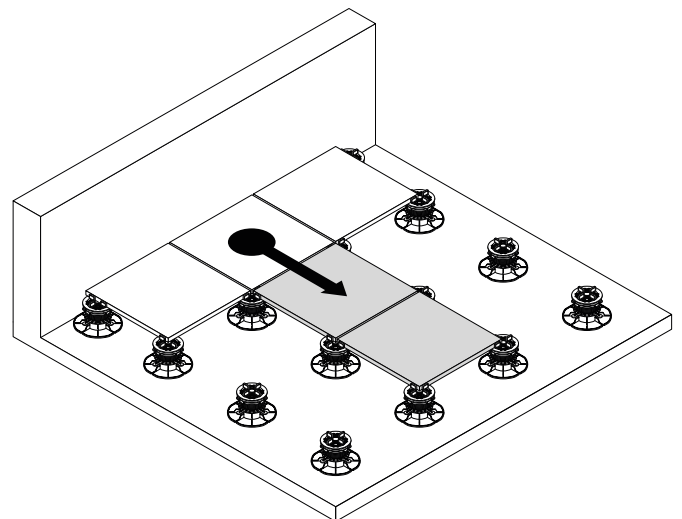
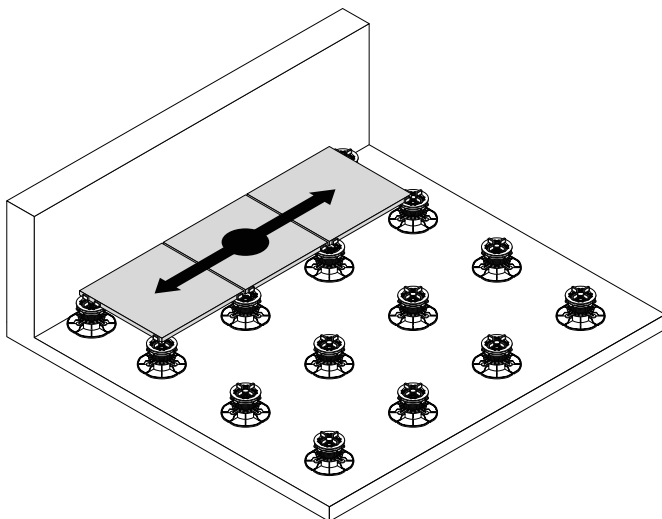
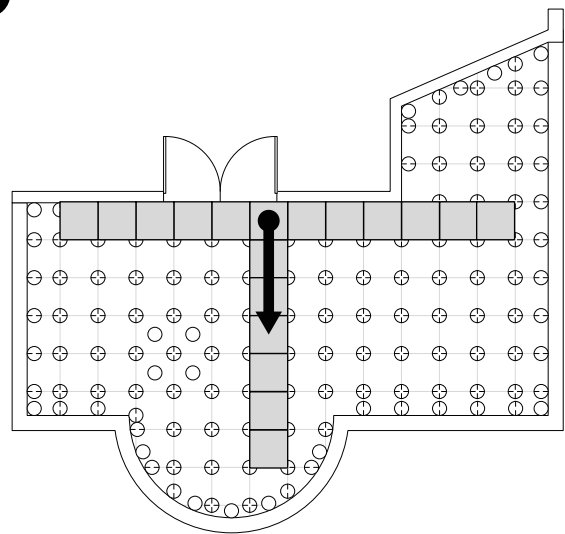
## ▼ Set start point

The first line of the tiles should lay along the longest wall, if possible. Begin with the first row that does not require cutting. Next, lay a perpendicular row in the longest possible line. Work from there to fill in all of the full tiles. Finish the patio by filling in all of the cut pavers.

1



2

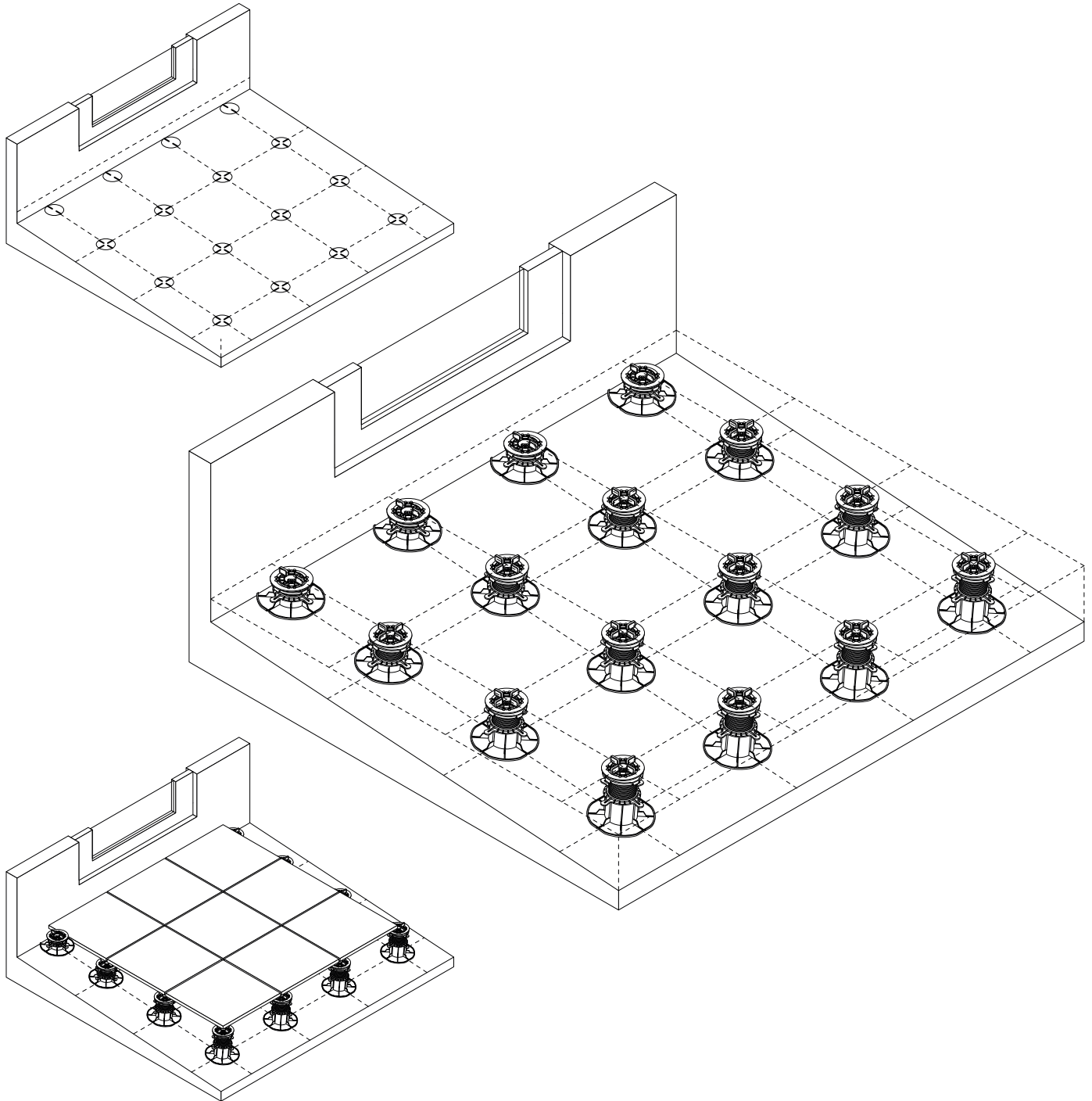




# INSTALLATION - PLACING PEDESTALS AT ENTRANCES

## ▼ Evaluating height of the terrace level

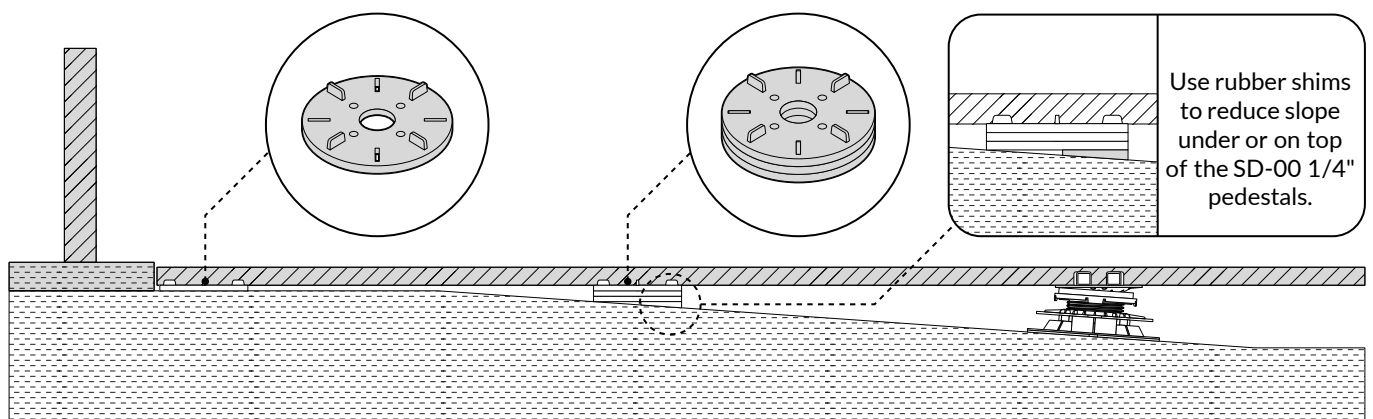
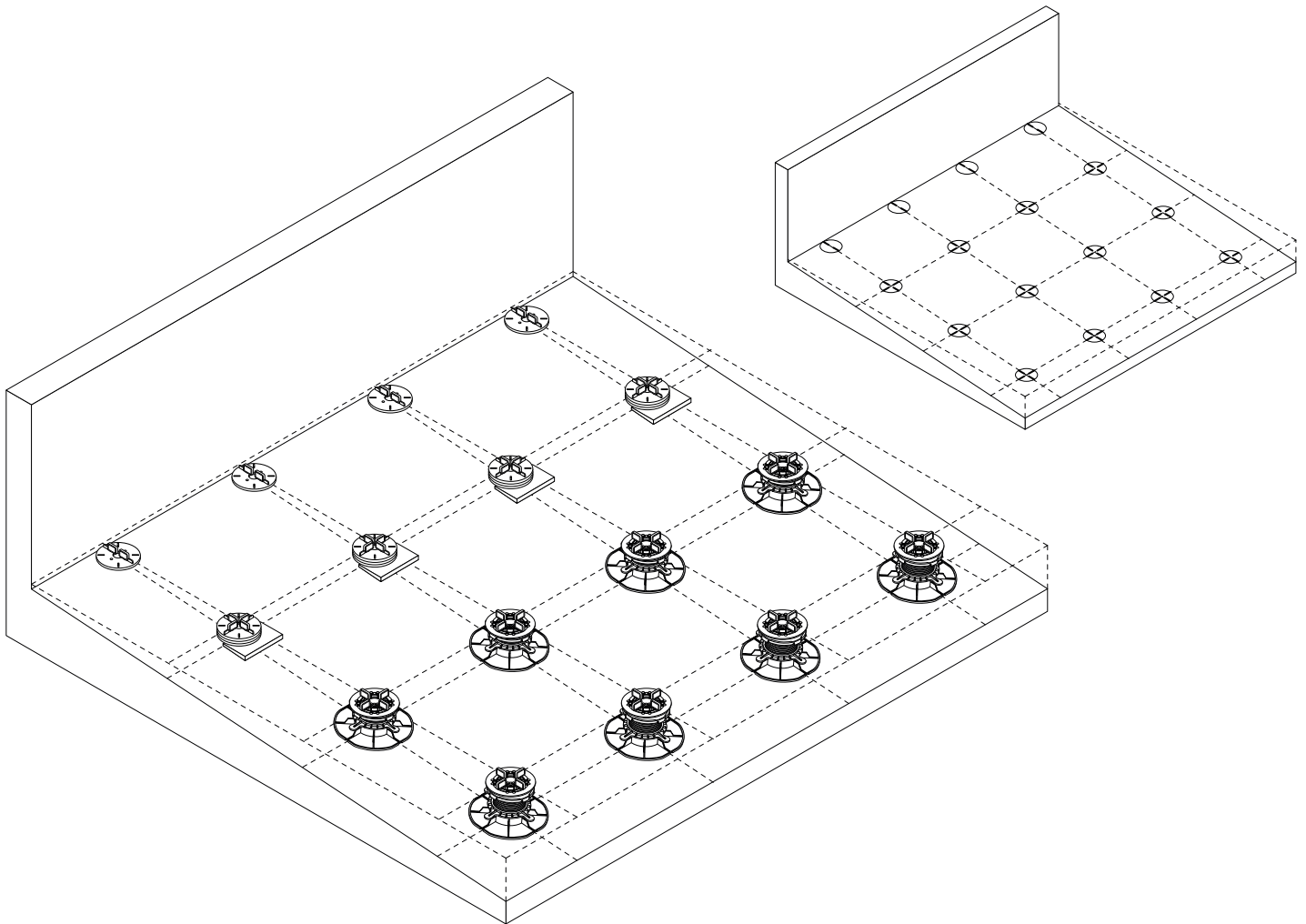
The doorways set the height for the entire terrace. Use local building codes to determine where your pavers need to line up at the entrance. The minimum entrance height needs to be 1/16" plus the thickness of your paver in order to accommodate the skydeck paver pedestal system. But, we recommend at least 4".



# INSTALLATION - USING LOW HEIGHT PEDESTALS

## ▼ Low height pedestals

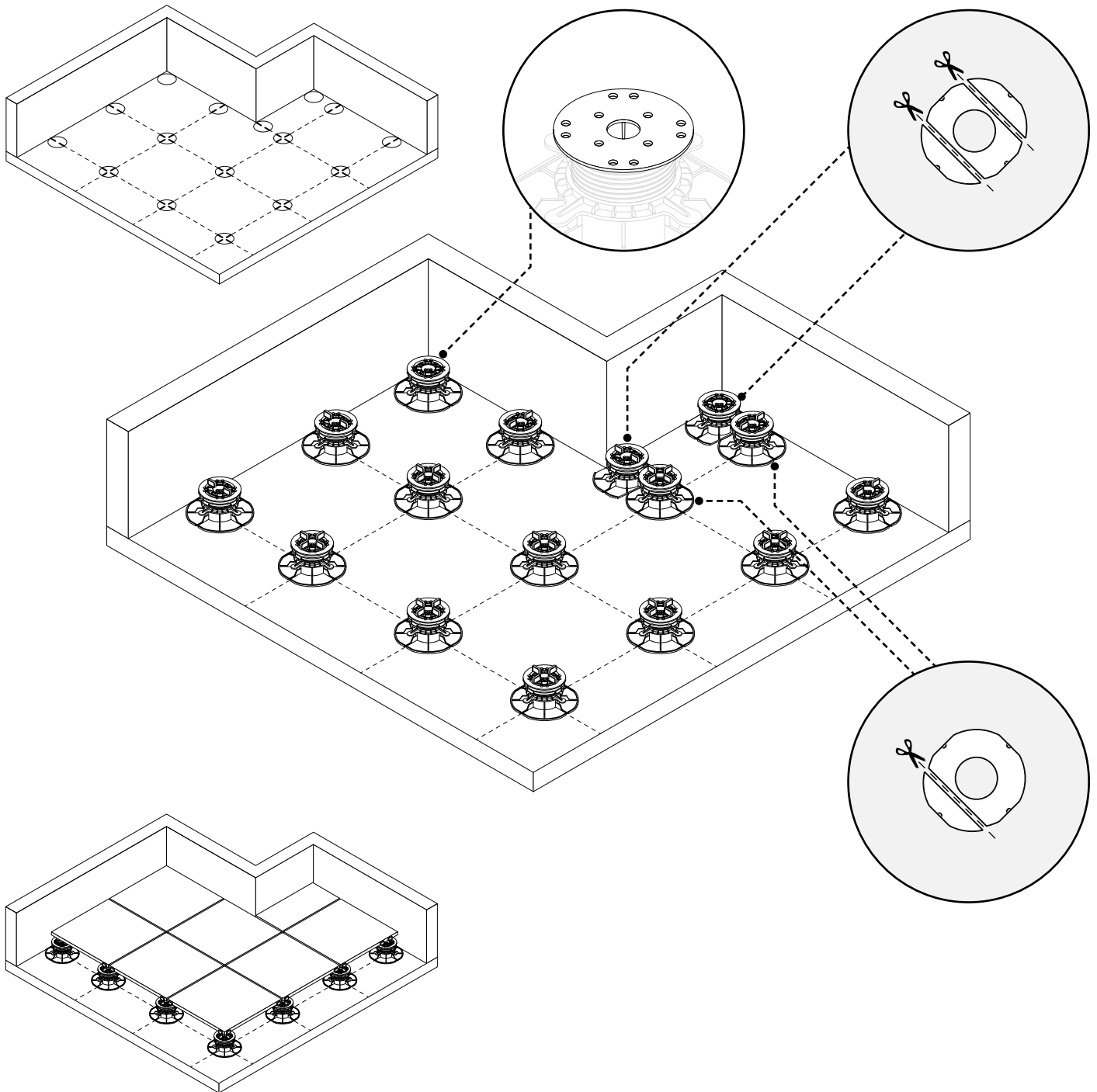
Sometimes the doorway height may require 1/16" or 1/4" stackable shims. In this situation, either the SD-XL-SH2 shims (1/16" thick) or the SD-00 (1/4" thick) may be used. Shims can also be added to the top or bottom of the SD-00 to level them.



# INSTALLATION - CORNERS

## ▼ Pedestal placement in corners

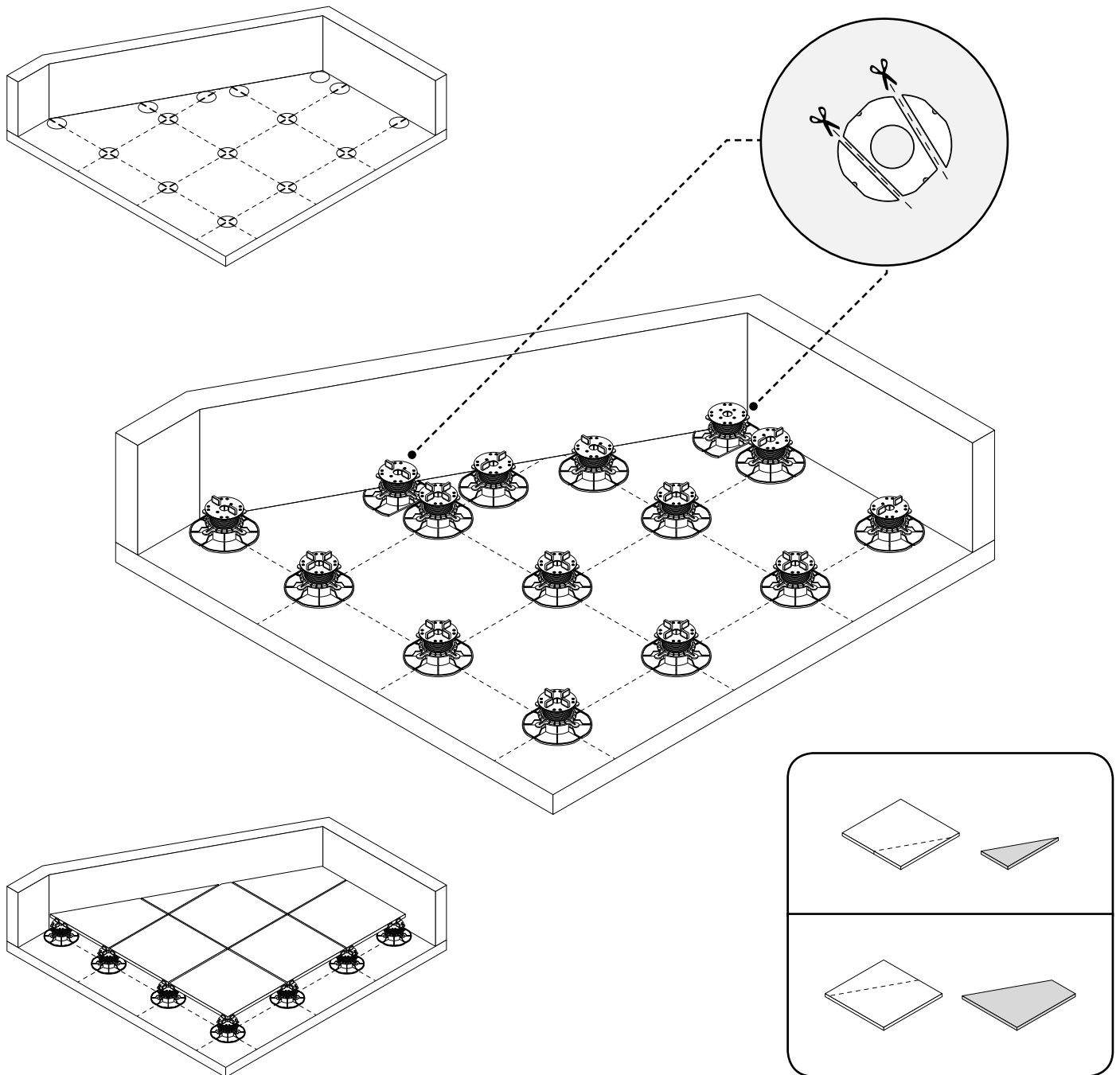
Corner pedestals that are holding full tiles can be pushed up to the corner as tight as possible. Wall clips may be used to help support the perimeter tiles and create uniform gaps along the wall. The pedestal base may also be cut along the perforated lines on the bottom of the pedestal to allow the pedestal to be pushed tighter against the wall.



# INSTALLATION - DIAGONAL WALLS

## ▼ Pedestals running along diagonal walls

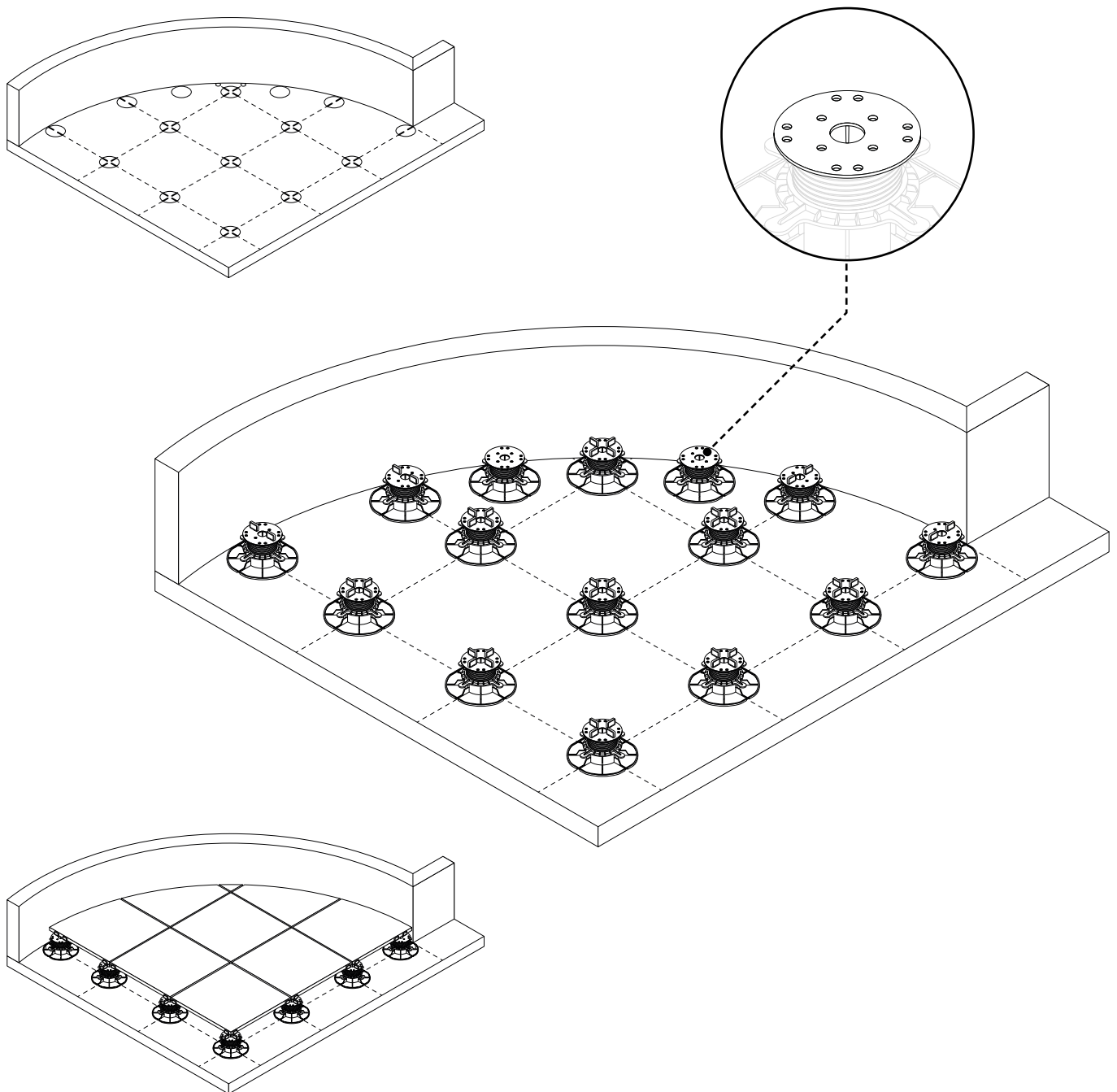
Pedestals must support each corner of the cut pavers along diagonal walls. The pedestal base may be cut along the perforated lines on the bottom of the pedestal in order to place them closer to the wall. Take measurements of odd shaped areas prior to starting the project to avoid very small slivers of pavers. Use wall clips to help support cut pavers along walls.



# INSTALLATION - LAYING PEDESTALS AGAINST AN ARC WALL

## ▼ Cutting pedestals and tiles

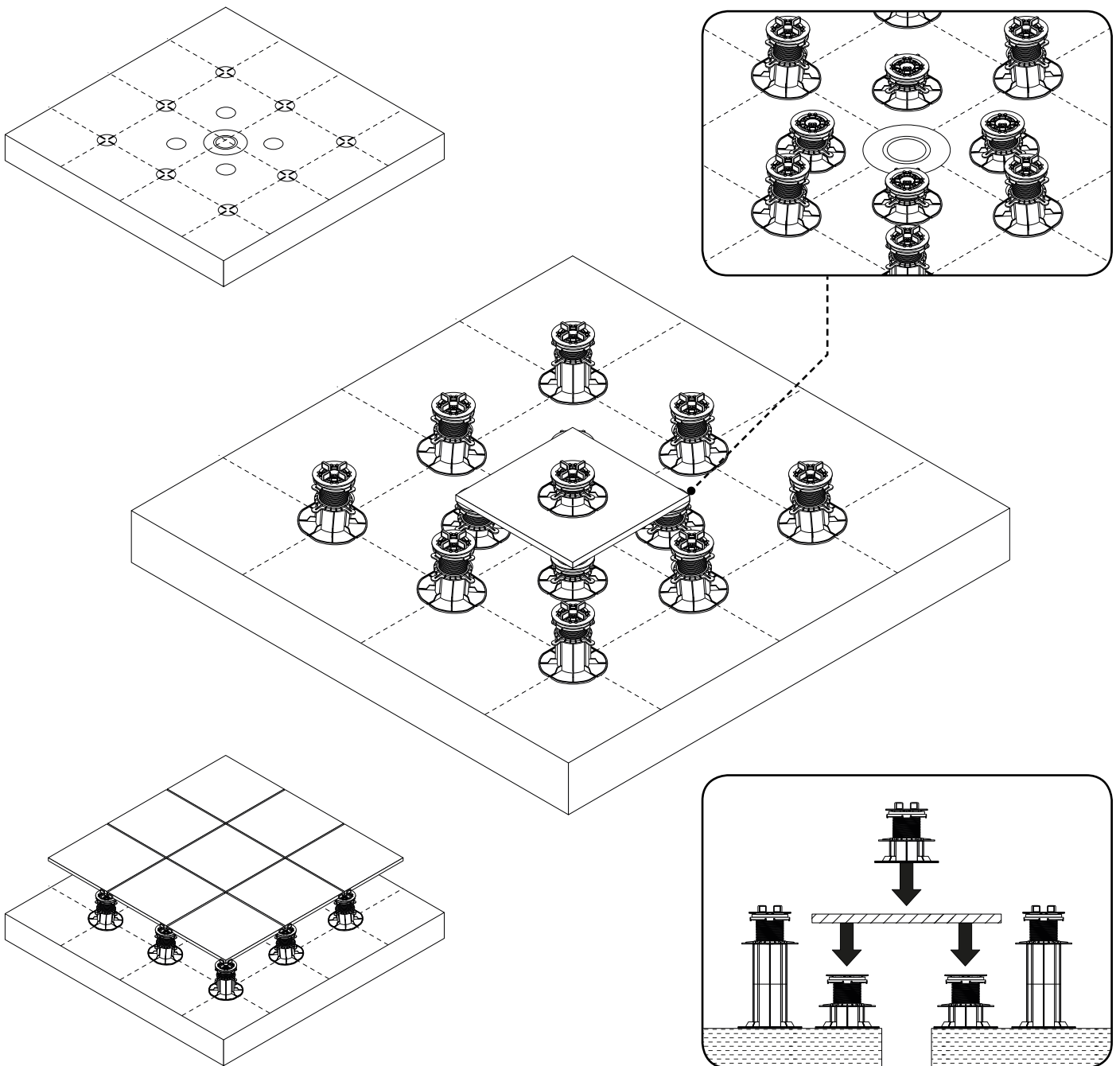
Custom pedestal layouts will be required along arc shaped walls. Place as many pedestals as required to ensure that pavers don't rock. . Take measurements of odd shaped areas prior to starting the project to avoid very small slivers of pavers. Use wall clips to help support cut pavers along walls.



# INSTALLATION - PEDESTALS OVER DRAINS

## ▼ Assembly for drain location

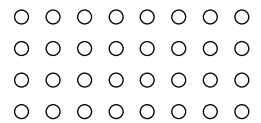
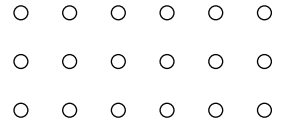
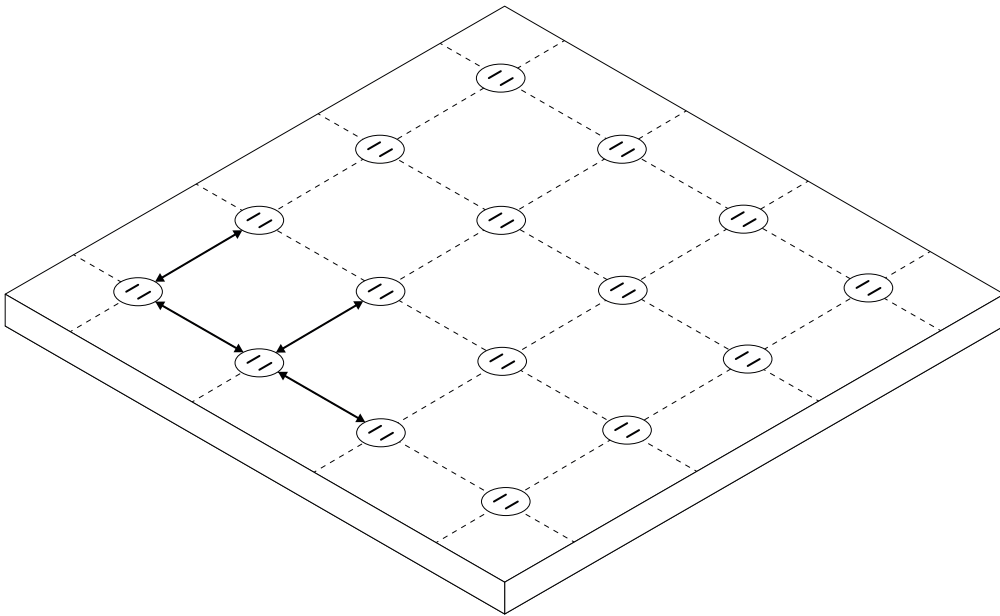
Sometimes a pedestal will be needed right on top of a roof drain. When this happens, use four short pedestals with a paver on top to build a platform for your pedestal.



# INSTALLATION - JOISTS ON PEDESTALS

## ▼ 1. Joist arrangement

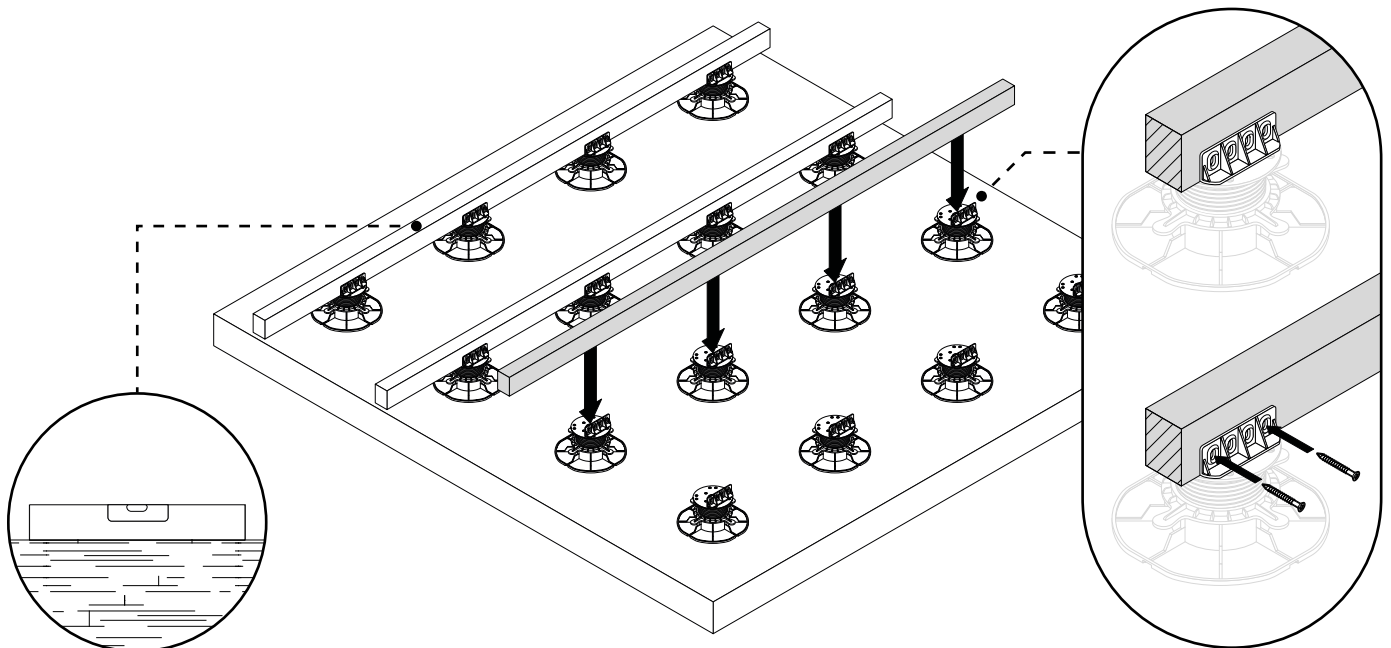
Joists must be placed no more than 16" o.c. apart and pedestals will be placed every 24" along each 2x4 joist for standard weight bearing and usage. Joist adapters can be used on the top of each pedestal to secure the joist to the pedestal head.



Larger joists and closer pedestal placement may be required. Consult an engineer for specific requirements on your project.

## ▼ 2. Pedestal placement and joist adapter use

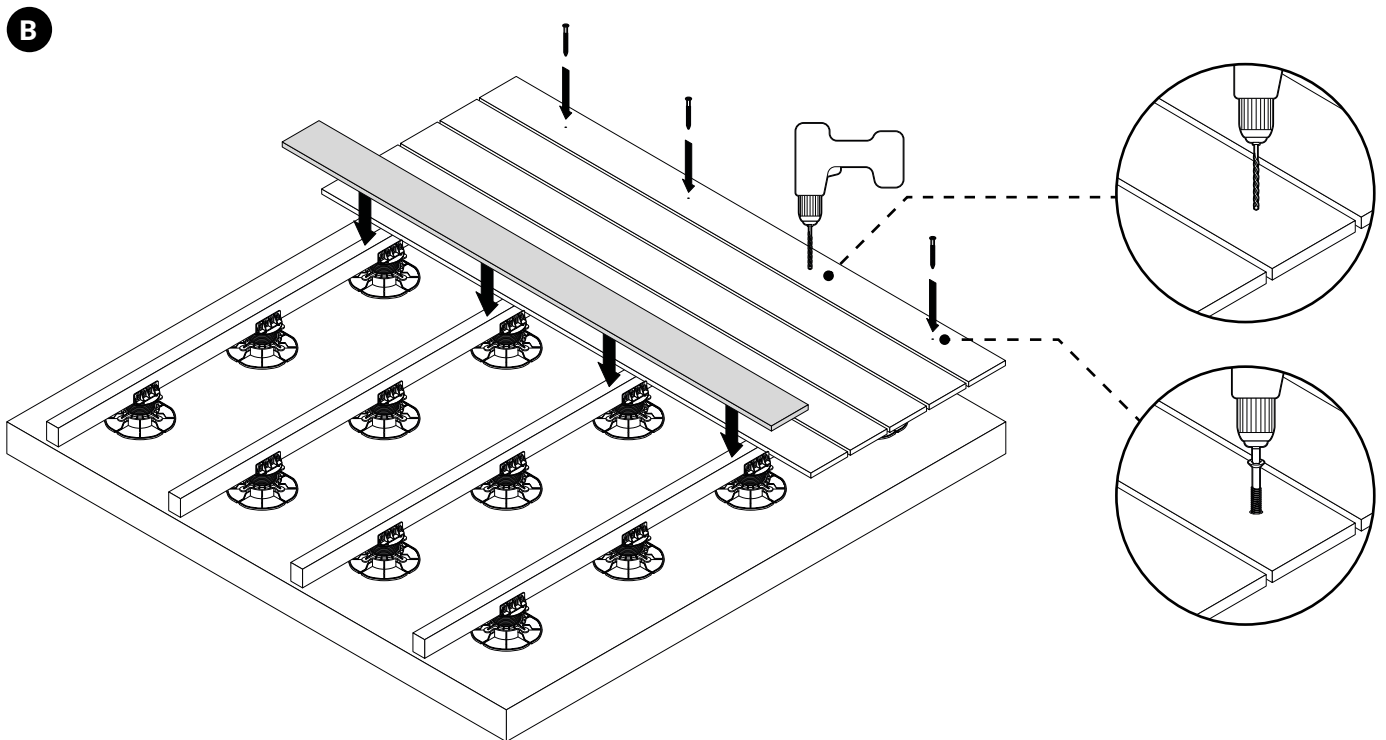
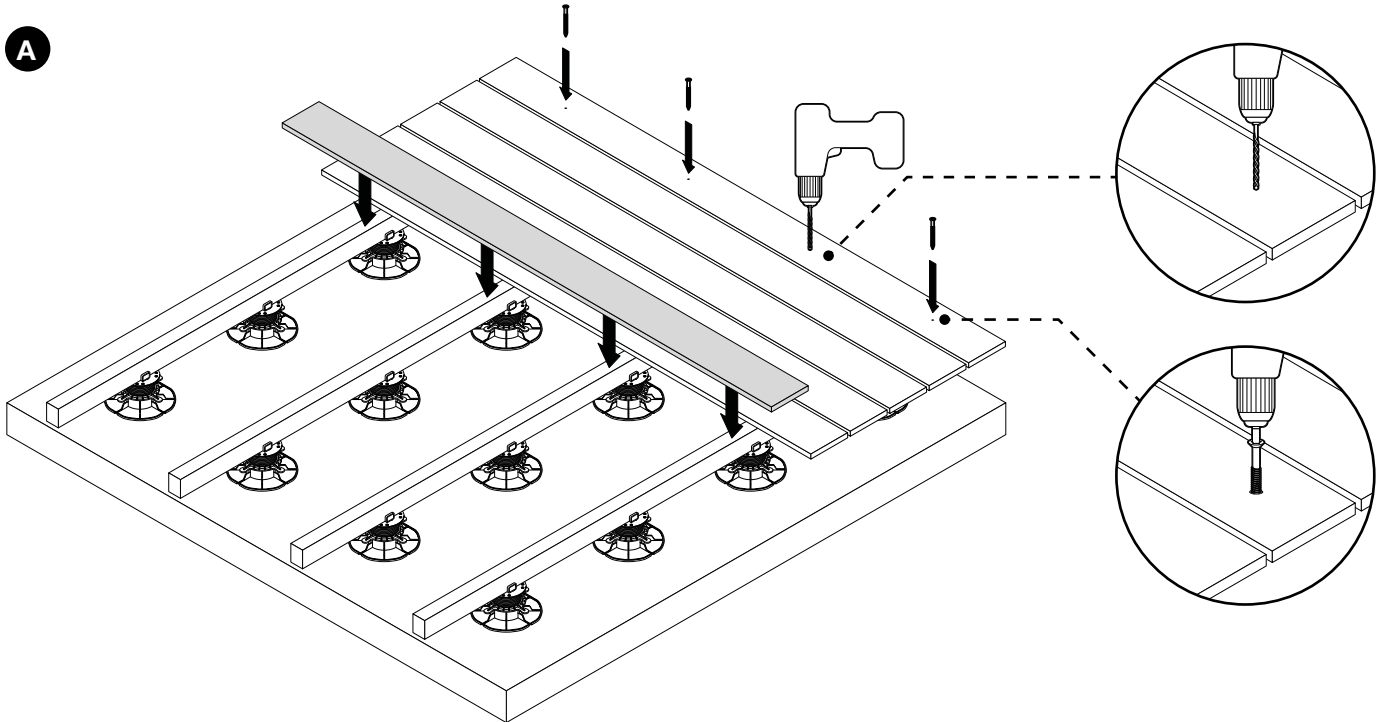
Place a joist adapter on the head of each pedestal and lay them out in the required locations. Then level each pedestal. Lay the joists out and place a screw through the joist adapter and into the joist to secure it to the pedestals. Check that the joist is level and move on to the next row.



# INSTALLATION - JOISTS AND DECKING ON PEDESTALS

## ▼ 4. Decking plank installation

Mount decking planks on the leveled joists. For additional deck strength, add perpendicular joists to create a square frame. Do not allow the joists to overhang the pedestals by more than a few inches at the ends.





# skydeck usa, llc Limited Warranty

**I. WHAT THIS WARRANTY COVERS**

- (a) skydeck usa, llc ("skydeck") warrants to the original building Owner ("Owner") of the skydeck grates, pavers and pedestals ("skydeck system") for the building described below, that subject to the terms, conditions, and limitations set forth in this warranty, the skydeck grates, pavers and pedestals will be free of material defects and will not photo-degrade to the point that they will no longer support the pavers and/or provide water drainage as a result of normal use for a period of three (3) years from the date of substantial completion, provided that the system is properly installed and is surrounded by edging or parapets such that the grates and pedestals are not exposed.
- (b) skydeck usa, llc ("skydeck") warrants to the original Owner ("Owner") that the materials will be delivered to the jobsite in new and functioning condition without defect.
- (c) The Owner shall notify skydeck in writing by registered mail and email at the addresses listed below within 15 days of the discovery of a suspected defect in the grates, pavers or pedestals that it believes have compromised the ability of the grates or pedestals to support the pavers. In response to this notice, skydeck usa, llc will arrange to inspect the pedestal and grate assembly and if, in its sole discretion, skydeck determines that there is a material defect that has resulted in a covered failure, skydeck usa's liability and the Owner's exclusive remedy is limited, at the option of skydeck, to the refund of the purchase price of the defective grates, pavers or pedestals or the replacement of the skydeck usa, in its sole discretion, deemed to be defective (exclusive of any products that were not purchased from skydeck usa including planters, tiles, green roof systems, furniture, pergolas, etc). Skydeck's liability and the Owner's remedies under this warranty shall be limited to the original cost of the products paid to skydeck usa, llc by the Owner, or on the behalf by any party or contractor hired or employed by the Owner.
- (d) Should skydeck's investigation determine the claim to be outside the scope of this Warranty, all costs for the investigation and repair or other services shall be paid by the Owner.

**II. WHAT THIS WARRANTY DOES NOT COVER**

- This Warranty is not a maintenance agreement or insurance policy; therefore routine inspections and maintenance are the Owner's responsibility. The Warranty is not applicable and does not obligate skydeck to replace products if skydeck determines that the any of the following has occurred:
- (a) Failures related to the workmanship or installation of the skydeck usa grates, pedestals, pavers or system. Any warranties for workmanship or installation, if available at all, are made by the installer and not skydeck usa, llc.
  - (b) Failures of any products that skydeck has not furnished and/or for which it has not received payment in full.
  - (c) Damage to the grates, pedestals or pavers because of failure of any material used as the base over which the products are applied (unless provided by skydeck) or damage to the products because of any material, assemblies or components used in, adjacent to or in contact with the products which were not furnished by skydeck. This includes damage to the grates, pavers or pedestals and/or impedance of their ability to provide proper support because of building settlement, distortion, failure or cracking of the structure upon which the skydeck usa system are installed or defects or failures of any other part of the building structure.
  - (d) Damage to the grates, pavers or pedestals by any acts of negligence, accidents, misuse or abuse caused by Owner or persons other than skydeck, or beyond skydeck's control, or outside the reasonable use, treatment or purposes of the skydeck patio assembly.
  - (e) Damage to the skydeck system from causes including, but not limited to: Fire, casualty, vandalism, malicious mischief, civil disobedience, acts of war, petroleum or other chemical attack, attack by rodents or other vermin, activities that result in damage or crushing of the Modules, damage resulting from storage of materials on the roof, solid objects falling onto the roof, heavy roof traffic, loads being transported on or across the roof, etc.
  - (f) Damage to the skydeck system caused by natural phenomenon or acts of God, including but not limited to: Lightning, wind gusts in excess of 55 miles per hour, ultra-violet light or radiation, hail, hurricanes, tornadoes, earthquakes, etc.
  - (g) Alterations or repairs made to the skydeck system or layout without first obtaining written approval from skydeck, or alterations or repairs to the skydeck system that are made by a contractor or personnel not licensed and authorized by skydeck to do so.
  - (h) Damage resulting from changes in the building use that add stresses to the skydeck assembly different than those observable at the time this Warranty was originally issued.
  - (i) Damage due to the Owner's failure to fulfill its obligations under this Warranty.
  - (j) Discoloration, changes in the visual appearance or other aesthetics.
  - (k) Damage to or failure of the underlying roofing or waterproofing system, substrate, or any of its materials, workmanship or components.

**III. OBLIGATIONS OF THE OWNER UNDER THIS WARRANTY**

- It is the obligation of the Owner to fulfill its duties and attend to its responsibilities both as stated elsewhere in this Warranty and as follows. The failure of Owner to perform any of its obligations under this Warranty shall terminate any liability of skydeck usa, llc for any warranty obligations of any nature whatsoever.
- (a) IT IS THE RESPONSIBILITY OF THE OWNER, ARCHITECT OR DESIGNER TO ASSURE THAT THE ROOFING ASSEMBLY IS SUITABLE FOR, AND APPROVED BY THE ROOFING MANUFACTURER FOR USE IN CONJUNCTION WITH THE SKYDECK SYSTEM, AND IS SUITABLE AS TO ROOF SLOPE AND DRAINAGE, AND THAT THE BUILDING STRUCTURE IS CAPABLE OF WITHSTANDING THE LOAD AND WEIGHT OF THE AGR SYSTEM.
  - (b) Owner shall pay all invoices issued by skydeck usa, llc in full and when due, and shall not offset any claims that the Owner may allege against skydeck usa, llc against any amounts due on skydeck usa's invoices. If Owner fails to pay all outstanding invoices in full and when due, and/or claims any offset against any invoices, then Owner shall not be entitled to any warranty protection or services.
  - (c) Owner shall provide skydeck usa, llc access to the building during regular business hours to make inspection.

(d) Owner shall not change the use of the building and/or the facilities contained within the building in such a manner that would be detrimental to and/or cause a deterioration of the skydeck system assembly.

**IV. EXCLUSIVITY OF WARRANTY AND LIMITATION OF REMEDIES**

- (a) SKYDECK DOES NOT WARRANT PRODUCTS WHICH IT HAS NOT FURNISHED AND SPECIFICALLY DISCLAIMS LIABILITY, UNDER ANY THEORY OF LAW, ARISING OUT OF THE INSTALLATION AND PERFORMANCE OF, OR DAMAGES SUSTAINED BY OR CAUSED BY, PRODUCTS NOT FURNISHED BY SKYDECK.
- (b) SKYDECK SHALL HAVE NO LIABILITY UNDER ANY THEORY OF LAW FOR ANY CLAIMS, REPAIRS, RESTORATION, OR OTHER DAMAGES, INCLUDING, BUT NOT LIMITED TO: DIRECT, CONSEQUENTIAL OR INCIDENTAL DAMAGES RELATING DIRECTLY OR INDIRECTLY TO:
  - (1) THE GROWTH OR PRESENCE OF ALLERGENS, MOLDS, FUNGI, BACTERIA, SPORES, MYCOTOXINS, IRRITANTS, CONTAMINANTS, VAPORS, FUMES, OR THE LIKE, IN THE BUILDING, THE AIR DUCTS, OR IN THE AIR, LAND OR WATER SERVICING THE BUILDING.
  - (2) ANY ISSUE OR FAILURE RELATED TO THE ROOFING OR WATERPROOFING SYSTEM OR ITS ATTACHMENT, INCLUDING, BUT NOT LIMITED TO: DETERIORATION OF, LEAKS IN, DAMAGE TO, OR ANY FAILURE OF THE MATERIALS OR WORKMANSHIP OF THE ROOFING OR WATERPROOFING MEMBRANE, INSULATION, ADHESIVES, FASTENERS, FLASHINGS, ROOF DECK, STRUCTURAL MEMBERS, OR OTHER SUBSTRATES.
  - (3) ROOF SLOPE AND DRAINAGE.
  - (4) THE ABILITY OF THE STRUCTURE TO SUPPORT THE LOAD AND WEIGHT OF THE SKYDECK SYSTEM, WHICH MUST BE DETERMINED BY OTHERS WHO ARE COMPETENT TO DO SO.

(c) THIS WARRANTY DOES NOT COVER, AND IN NO CASE SHALL SKYDECK BE LIABLE FOR, ANY SPECIAL INCIDENTAL, OR CONSEQUENTIAL DAMAGES BASED ON BREACH OF WARRANTY, BREACH OF CONTRACT, NEGLIGENCE, STRICT LIABILITY, TORT OR ANY OTHER LEGAL THEORY. SUCH EXCLUDED DAMAGES INCLUDE, BUT ARE NOT LIMITED TO, LOSS OF PROFITS, SAVINGS, OR REVENUE, COST OF SUBSTITUTE EQUIPMENT, FACILITIES OR SERVICES, BUSINESS INTERRUPTION, THE CLAIMS OF THIRD PARTIES INCLUDING CUSTOMERS, AND ANY AND ALL OTHER INCIDENTAL AND CONSEQUENTIAL DAMAGES. INCIDENTAL AND CONSEQUENTIAL DAMAGES SHALL NOT BE RECOVERABLE EVEN IF THE REMEDIES OR ACTIONS PROVIDED HEREIN ARE DETERMINED TO HAVE FAILED OF THEIR ESSENTIAL PRUPOSES.

(d) THE VALUE OF THE REMEDIES STATED ABOVE SHALL NOT EXCEED, SINGLY OR IN THE AGGREGATE, OVER THE LIFE OF THIS WARRANTY, THE ORIGINAL COST OF THE SKYDECK PRODUCTS PAID BY THE OWNER.

(e) THE REMEDIES STATED HEREIN ARE THE SOLE AND EXCLUSIVE REMEDIES FOR ANY FAILURE OR ALLEGED FAILURE OF THE SKYDECK SYSTEM. THERE ARE NO WARRANTIES, INCLUDING WARRANTIES OF MERCHANTABILITY OR FITNESS FOR A PARTICULAR PURPOSE, EITHER EXPRESSED OR IMPLIED, WHICH EXTEND BEYOND THE FACE HEREOF.

**V. TIME LIMIT FOR BRINGING SUIT**

Any action by Owner to enforce any claim(s) against skydeck usa, llc, must be commenced within ninety (90) days from the date that a defect in the skydeck system or other breach or any other claim is discovered, or reasonably should have been discovered.

**VI. MISCELLANEOUS**

- (a) This Warranty is extended only to the original Owner identified herein and is not transferable or assignable by operation of law or otherwise. It is not intended nor shall it be construed to create rights for any third party.
- (b) If at any time skydeck does not enforce any of the terms, conditions or limitations stated in this Warranty, skydeck shall not have waived the benefit of said term, condition or limitation and can enforce it at any time.
- (c) This Warranty is issued at the corporate offices of skydeck usa, llc in Grand Rapids, Michigan, and accordingly is governed by Michigan law. Jurisdiction and venue of any dispute arising under/or pursuant to the terms of this Warranty shall be vested in courts sitting in Kent County, Michigan.
- (d) This Warranty Agreement is understood to be the complete and exclusive Warranty Agreement between the Owner and skydeck usa, llc, superseding all prior agreements, whether oral or written, and all other communications between the parties relating to the subject matter of this Warranty. Any additional or contradictory warranty terms or conditions stated in skydeck's Quotes, proposals, the Owner's purchase order/acceptance documentation or other written communication shall not be valid or binding upon skydeck usa, llc under any circumstances. The failure of skydeck to respond shall be deemed a denial of any such additional terms or conditions. No representative of skydeck has the authority to make any representations or promises about the Warranty or the performance of our services that differ from this written Warranty. Changes to this Warranty may only be made by a skydeck usa, llc Corporate Officer.

Warranty Date:		Skydeck Products Covered:	
Square Footage:			
Job Location:		Building Owner:	

**skydeck usa, llc | 4450 Bradford Farms Ct, Grand Rapids, MI 49525**