



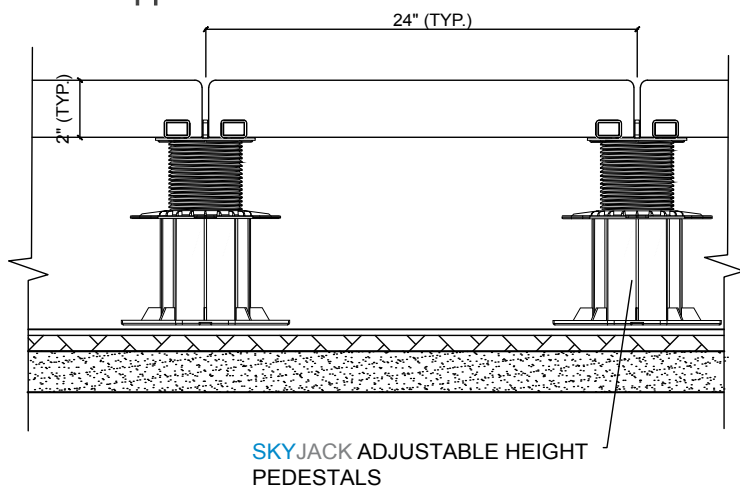
Intended Uses:

SKYWALK architectural pavers are intended for creating beautiful rooftop patios, accommodating the unique needs of any project. Whether you require ADA-compliant pavers, LEED-certified pavers, solar ballast pavers or drain pavers, we design them all to meet your specific needs.

Manufacturing Process:

SKYWALK pavers are compressed with 460 tons of pressure utilizing a European hydraulic press that eliminates excess water and air. Precision molds ensure uniform size and texture, while allowing for a wide variety of sizes, colors and aggregates.

Standard Application:



SKYJACK ADJUSTABLE HEIGHT
PEDESTALS

Sizes Available: 23-1/2" X 23-1/2" x 2" (standard)

11 3/4" X 11 3/4"	23 1/2" X 23 1/2"
11 3/4" X 23 1/2"	23 3/4" X 23 3/4"
11 3/4" X 36"	23 7/8" X 47 7/8"
12" X 36"	23 7/8" X 23 7/8"
11 7/8" X 47 7/8"	23 1/2" X 29 3/8"
14 1/2" X 14 1/2"	23 7/8" X 35 7/8"
15 3/4" X 15 3/4"	23 1/2" X 35 3/8"
17 5/8" X 17 5/8"	27 3/4" X 27 3/4"
17 5/8" X 23 1/2"	29 1/2" X 29 1/2"
17 5/8" X 35 3/8"	29 3/4" X 29 3/4"
14 5/8" X 29 5/8"	35 1/2" X 35 1/2"

***Pavers can be made
between 1.5" and 3.5" thick.**

Compressive Strength:

Minimum of 8,500 PSI

Flexural Strength:

Minimum of 1,100 PSI

Density:

150 Pounds per Cubic Foot

Water Absorption Rate:

Less Than 4.1%

Freeze/Thaw:

No More Than 1% Loss of Dry Weight

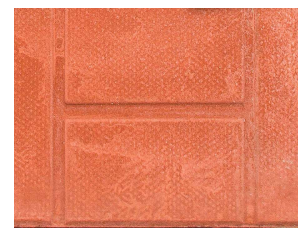
SKYWALK PAVERS by skydeck usa



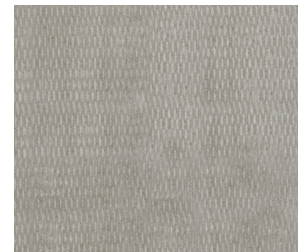
DRAIN PAVER



ADA-CERTIFIED



BRICK-FACED



DIAMOND CUT



AGGREGATE

****Due to our precision engineering, we can manufacture SKYWALK pavers to meet any architectural or engineering specification.**